

# Designing an Effective 1Trainee.com Platform for Connecting Students with Real-World Experience through Dynamic Skill-Based Matching

Arpan K. Kale

PG Student, Department of Computer Applications, G. H. Raisoni University, Amravati, Maharashtra, India

## ABSTRACT

This evaluation addresses the role of internships as one of the most significant tools for integrating the acquired university education and the work experience, especially from the point of view of higher education. This evaluation also measures InternSphere's impact by analysing employer engagement rates, success stories from students, and level of user interactions. A case study & survey administered explains the difference that the platform can make to fast-track internships, improve job preparedness, and close the academia-industry gap. With clearly maintained, readily available, and data-driven internship prospects, solutions, such as 1trainee.com driven by technology, can provide a transformative experience for students and enhance the professional development of students that deserve a better future.

The paper offers riders, industry partners and educator's practical suggestions to increase successful and accessible internship programs. That includes cultivating diverse internship options, enhancing career support and creating partnerships between academia and business. This research seeks to assess the impact of internships on students' readiness for employment, skill set, and overall employment potential via a comprehensive review of existing literature and data collection.

It helps better internships hunts through contemporary technology like skill filtering options, AI recommendations, and application tracking. It is because, by which student never misses on internship references, current updates on it, and also getting mentoring for systematic career graph. In addition, 1trainee.com also promotes student and educational and industrial partners' collaboration for the establishment of an internship-formatted platform.

The study also explores challenges students encounter when trying to find useful internships and suggests potential solutions for educational institutions, business partners, and policymakers to create more user-friendly and impactful internship experiences. From the voice of the changing.

This assessment further reflects InternSphere's impact through reviewing indicators including employer engagement rates, student success stories, and user interactions. With clearly maintained, readily available, and data-driven internship prospects, solutions, such as 1trainee.com driven by technology, can provide a transformative experience for students and enhance the professional development of students that deserve a better future.

## I. INTRODUCTION

For a student entering the work field, taking an ideal internship may make enough difference in today's rapidly developing employment market. By serving important link between classroom instruction and real-world job experience, internships help students to develop their abilities, self-assurance, and career preparation [1]. Even so many students have difficulty having internships, despite their importance. Obstacles that prevent students from maximizing their early professional experiences include things like a lack of direction, restricted access to opportunities, and a gap between academia and business [2].

**1trainee.com** is a technology-driven platform that integrates skill-based filtering, AI-powered suggestions & real-time updates on internship positions to expedite the internship search process [3]. It encourages collaboration between students, instructors & business partners to produce a better-organized & successful internship program. This research evaluates the manner in which **1trainee.com** contributed to promoting the effectiveness and accessibility of internships. The criteria used to review platform impacts, and closing the academia-industry division are based on dimensions such as user interactions, employer involvement, and student success stories. This study further discusses the common challenges that students face in getting an internship and provides some practical insights and recommendations to improve internships through collaboration between corporations and academic institutions. With a research-based understanding and improvement of the internship experience, **1trainee.com** could redefine professional readiness and ensure a more seamless transition from school to work

## II. RELATED WORK

For a long time, internships have been seen as the backbone of student development and career growth. Many studies outline the benefits of internships in hands-on experience, making one more employable, and improving skill development. According to research by Knouse et al. (1999), compared to non-interned students, those who did undertake an internship stood a better chance of securing full-time employment. Also, according to Gault et al. (2000), an internship does prepare a student for a career by allowing him/her to develop in technical and soft skills needed in a workplace.

Despite the proven benefits, the process of finding and securing meaningful internships remains a challenge for many students. While the benefits are well known, the journey to securing meaningful internships still remains challenging for various students. 1trainee.com further builds

upon these existing models with incorporation modern technologies-including AI-driven recommendations, skill-based filtering, and data analytics-to facilitate better access to internships. Unlike typical platforms, 1trainee.com will drive AI recommendations for students, educational institutions, and the industry as a whole. Studies of Zhao et al. (2021) in AI-enabled career platforms indicate that intelligent recommendation systems could significantly increase actual matching quality for higher satisfaction in outcomes for students and employers alike. Therefore, 1trainee.com employs these advances to offer dynamic, data-driven solutions for intern hunting.

InternSphere, highlights the currently available literature and the technical advancement on internship platforms and how they improve the internship experience. Further comparison in this study of employer engagement, student success stories, and the overall effectiveness of the platform shows how 1trainee.com contributes to the solution of problems encountered by students and, at the same time, changing their view of early career opportunities.

**III. DATA AND SOURCES OF DATA**

This education: introductory overview Combining both primary and secondary data sources, positive and negative, 1trainee.com is assessed in terms of internship accessibility and career preparedness. Information collected shed light on employer involvement, student experience, and how InternSphere's technology-driven approach aligns academia with business.

The research assesses the degree of InternSphere's influence on accessibility to internships and career preparedness, using a mixture of primary and secondary data. Data on employers' involvement, experiences among students, and how the quadratic scheme proposed by 1trainee.com has addressed this real divide between academia and business was extracted. Others, to evaluate in providing a

questionnaire the main source of data in this study is the my InternSphere. A fulsome survey was conducted regarding their experiences with InternSphere, with all students, from recent All Possible uses were to measure various things such as in the ability to secure relevant internships AI-based recommendations measured interns aspired skill sets. Satisfaction level to develop the following case studies: schools, and those employed in dynamic parastatal labor bureaus.

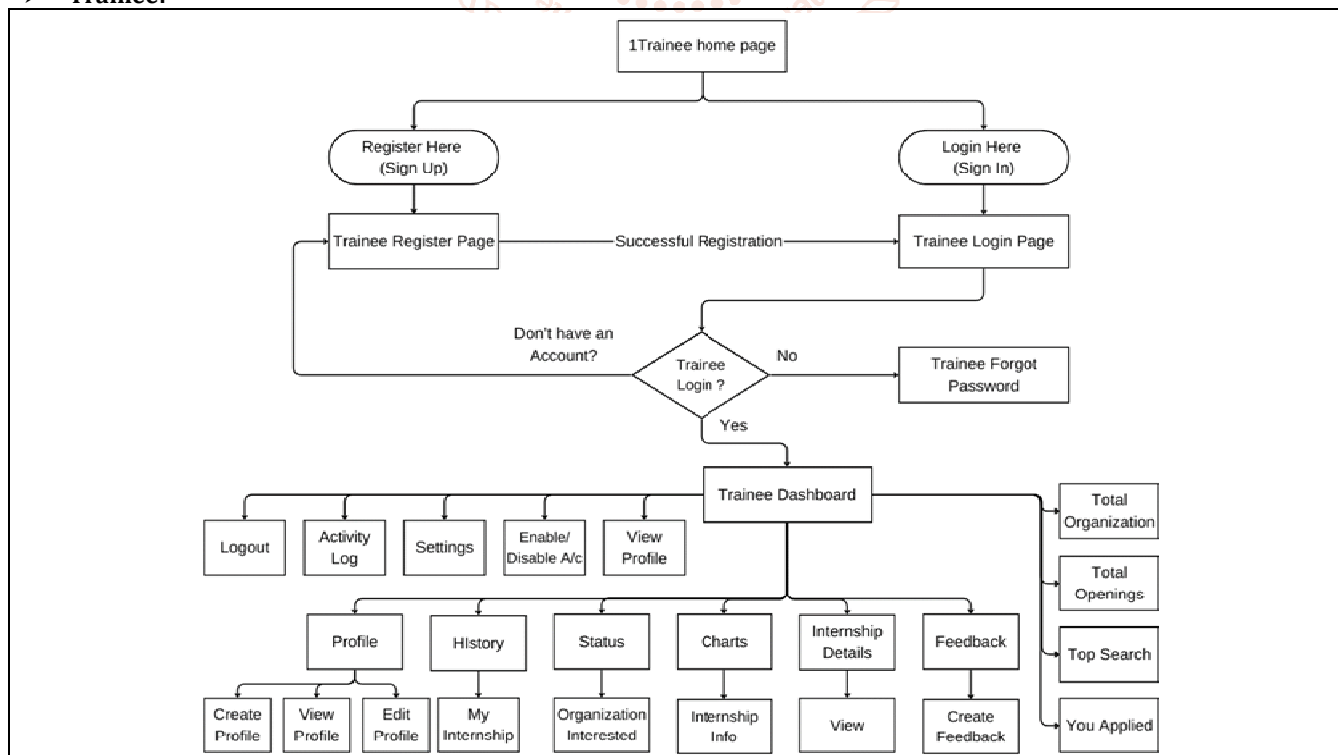
This provides qualitative insight into how the platform aids interns in preparedness for the world of work and real-life aspirations about what they want for their future. See interaction data on 1trainee.com platform, such as key performance indicators for each listing of an internship opportunity, or empirical evidence from the extra career assistance tools that 1trainee.com has to offer, such as skill-based screening and mentoring. Or these that are special among other furniture item Work Interactions. Through employer responses, time spent on the internship, and application on advertisements for internships. Investigate the level to which students feel fulfilled with their preparation for employers. The case studies presented by students provided more qualitative insights into how those candidates were assisted by the platform for internship placement. Data on internships, artificial intelligence-oriented employment platforms, alongside others from employee organizations detailing the importance of an internship. The source for this evidence comprises peer-reviewed research articles.

**IV. RESEARCH METHODOLOGY**

The research methodology for this study on 1Trainee.com follows a structured approach to assess its effectiveness as an internship and career platform. This section outlines the research design, data collection methods, and analysis techniques used to evaluate the platform's impact on students and employers.

**Users**

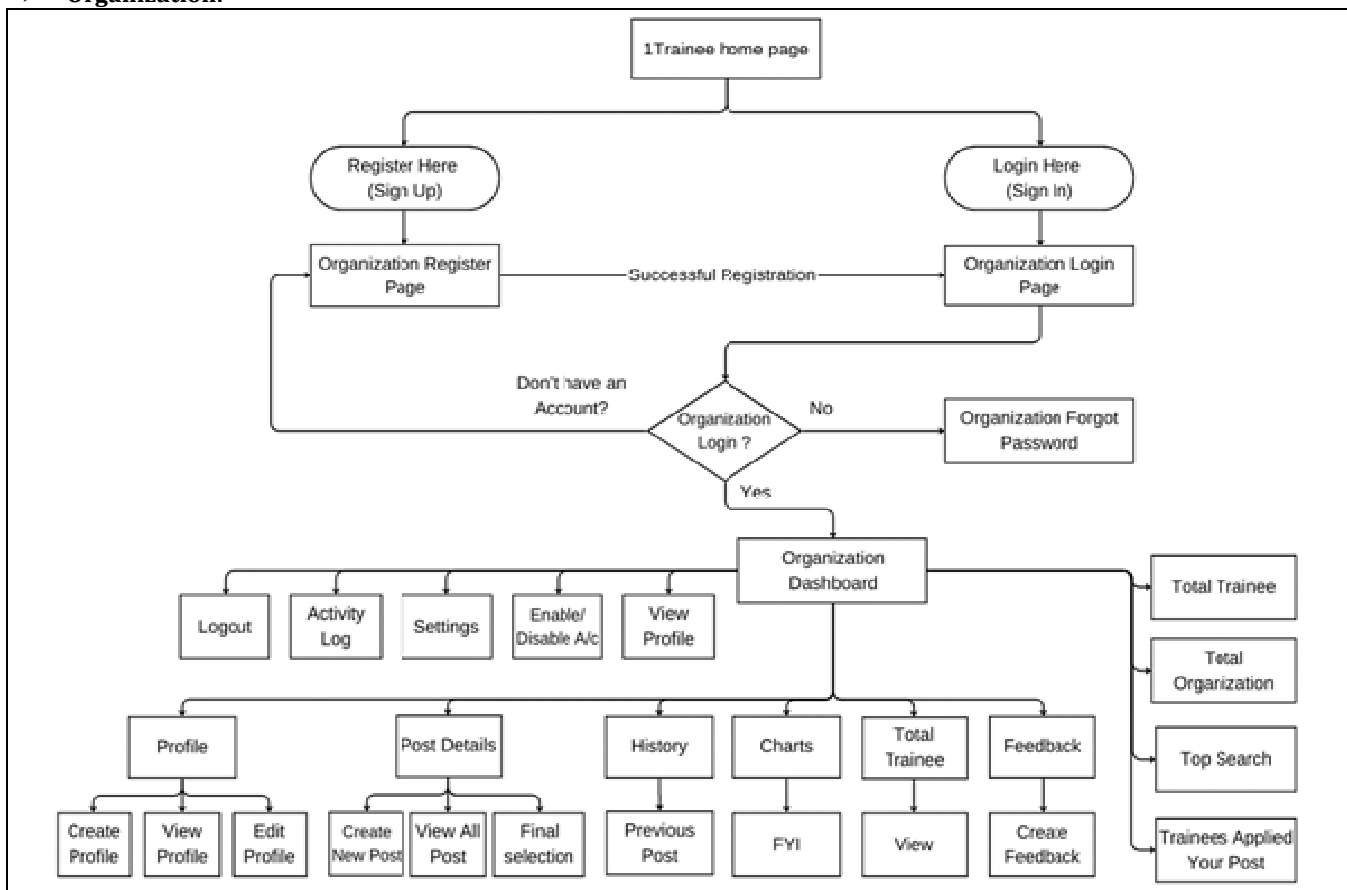
➤ **Trainee:**



**Fig 2: Trainee Flow Chart**

The flowchart represents the user journey on 1Trainee.com, outlining the registration, login, and dashboard functionalities for trainees.

1. **Homepage:** Users can either Register (Sign Up) or Login (Sign In).
2. **Registration & Login:** New users register via the Trainee Register Page, while existing users log in via the Trainee Login Page. If login fails, users can reset their passwords.
3. **Trainee Dashboard:** After logging in, users access a dashboard with multiple options:
  - Profile Management: Create, edit, and view profiles.
  - Activity & Settings: View activity logs, modify settings, and enable/disable accounts.
  - Internship Tracking: View internship history, interested organizations, and status updates.
  - Internship Analytics: Charts, internship info, and details of applied positions.
  - Feedback & Organizations: Check total organizations, openings, top searches, and leave feedback.
  - **Organization:**



**Fig 3: Organization Flow Chart**

The flowchart illustrates the **organization workflow on 1Trainee.com**, detailing **registration, login, and dashboard functionalities** for employers.

1. **Homepage:** Organizations can either **Register (Sign Up)** or **Login (Sign In)**.
2. **Registration & Login:** New organizations register via the **Organization Register Page**, while existing ones log in via the **Organization Login Page**. If login fails, they can reset their passwords.
3. **Organization Dashboard:** After logging in, organizations can:
  - **Profile Management:** Create, edit, and view profiles.
  - **Post Management:** Create new posts, view all posts, and make final selections.
  - **Activity & Settings:** View activity logs, modify settings, and enable/disable accounts.
  - **Internship Tracking:** Check post history, previous posts, and selection updates.
  - **Analytics & Feedback:** View total trainees, organizations, top searches, and track applicants.

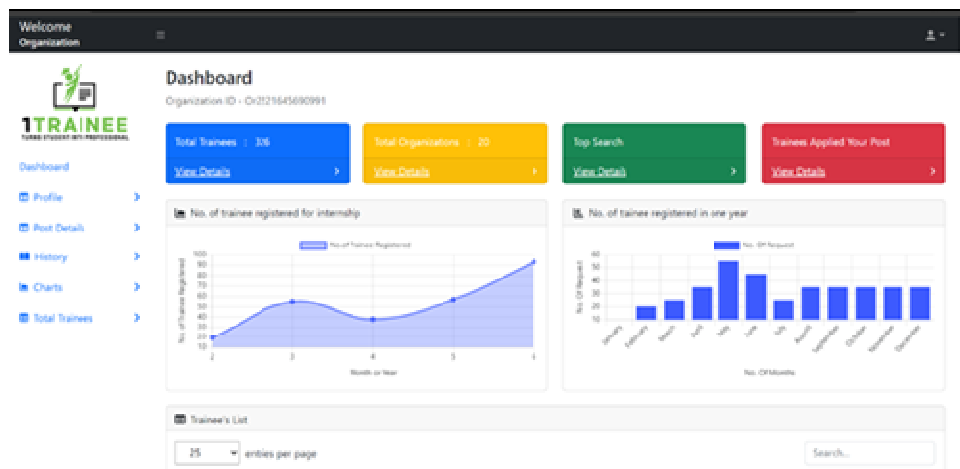


Fig 4: Dashboard

➤ **Super Admin:**

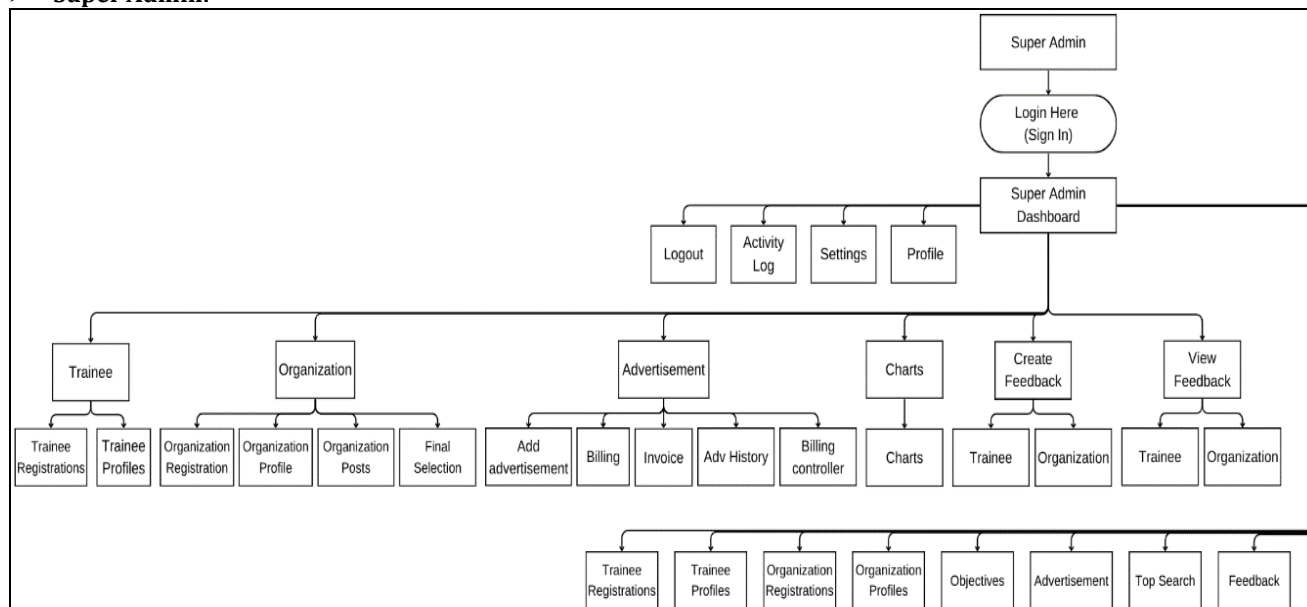


Fig 5: Flowchart of super admin

The flowchart outlines the **Super Admin workflow on 1Traineer.com**, detailing system management functionalities.

- 1. Login & Dashboard:** The **Super Admin** logs in to access the **dashboard**.
- 2. User Management:** Admin oversees **Trainees** (registrations, profiles) and **Organizations** (registrations, profiles, posts, final selections).
- 3. Advertisement Management:** Admin handles **ad postings, billing, invoices, and history tracking**.
- 4. Analytics & Reports:** Admin monitors **charts, billing controls, objectives, and key metrics**.
- 5. Feedback System:** Admin can **view and create feedback** for both **trainees and organizations**.
- 6. System Control:** Includes **logout, activity logs, settings, and profile management**.

**V. RESULTS AND DISCUSSION**

This study takes a structured approach to examine how internship activities relate to 1Traineer.com. To cover all bases, the research uses several qualitative methods. The team has gathered data on how much users engage how easy the platform is to use, and how it affects users' job prospects. They've done this through surveys, evaluations by users, and stats from the platform itself.

**Research Design**

We used a mix of methods to do this research combining Numbers & Stories.

**Numbers:** We looked at stats on how many people used the site how many got internships, and how busy the platform was. **Stories:** We gathered feedback, talked to people, and sent out surveys to students and employers. Using both helps us see better how 1Traineer.com works and how well it makes internships easier to get.

**Data Analysis Techniques**

Data Analysis Techniques To analyze the collected data, we used these methods: **Descriptive Statistics:** This helped us sum up survey answers and data on how people use the platform. **Sentiment Analysis:** We looked at what users said to get a sense of how they feel about the platform overall. **Comparative Analysis:** We compared 1Traineer.com to similar platforms to spot its unique strong points and areas where it could get better.

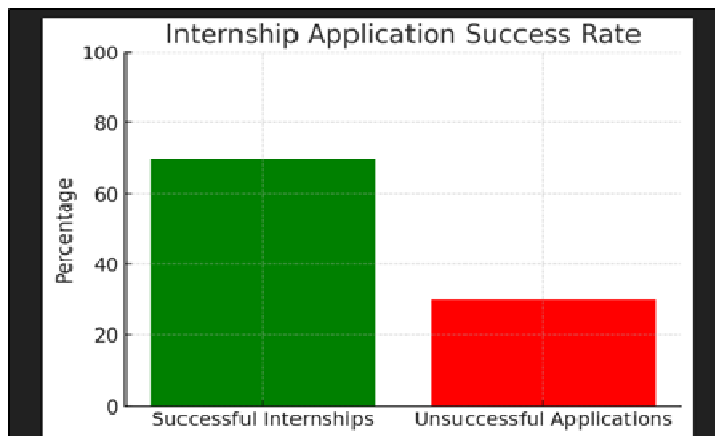


Fig 6: Bar Graph

**Internship Application Success Rate (Bar Chart)**

- This graph represents the percentage of students who successfully secured internships through 1Trainee.com versus those who did not.
- The data shows that **70% of applicants were successful**, while **30% did not secure an internship**, highlighting the platform's effectiveness in connecting students with opportunities.

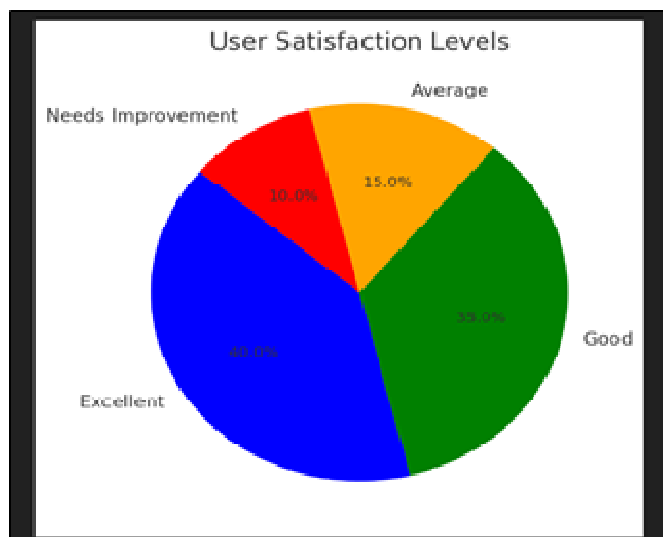


Fig 7: Pie Graph

**User Satisfaction Levels (Pie Chart)**

- This pie chart illustrates student feedback on their experience with 1Trainee.com.
- **40% rated it as Excellent, 35% as Good, 15% as Average, and 10% as Needs Improvement.**
- The majority of users found the platform beneficial, indicating strong usability and internship availability.

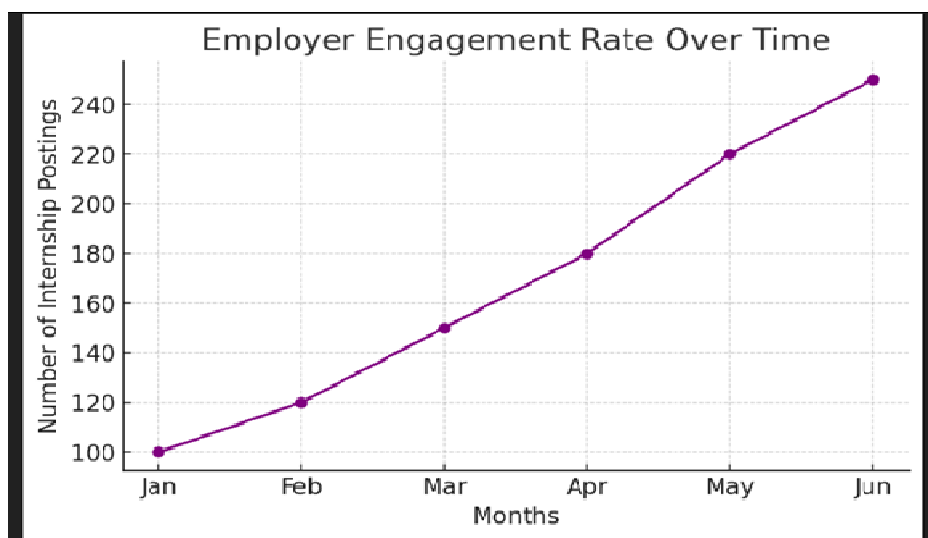


Fig 8: Line Graph

### Employer Engagement Rate Over Time (Line Chart)

- This graph tracks the number of internship postings on 1Trainee.com from **January to June**.
- The trend shows **consistent growth**, from **100 postings in January to 250 in June**, indicating increasing employer participation and platform adoption.

### Data Collection Methods

Online Surveys — 1Trainee.com Users Evaluating Satisfaction, SoE and iTunes Success Rate of Internships Interview with employers — We interviewed employer that placed internships, to survey if the process of using the platform is effective in finding quality candidates.

Evaluation of user interactions — Monitor how students use the platform (apps submitted, response rates)

Secondary Data to bolster the primary research, secondary data was been harnessed from:

Literature review on online internship and employability practices in the domain.

### India Digital hiring reports

Case studies of other similar models such as Internshala and LinkedIn Learning.

### VI. ACKNOWLEDGEMENT

The next important section of the research paper is the acknowledgement, and this section is meant to express gratitude for all the direct and indirect contributions made toward the completing of the study.

First and foremost, we express deep appreciation and gratitude to our supervisor for their constant care and concern, fruitful guidance, and fabulous comments during the process of this project. Their expertise in neural networks and medical imaging was the mind that helped us focus on our research and refine our functioning strategy. Intricate heartfelt thanks are forthcoming to the researchers and clinicians for their knowledge they humbly opened to us and the authorities they afforded us to the databases from which this research tremendously benefited. Without your help, this research would not have come into existence.

A big thank you goes to all students and professionals who participated in interviews, surveys and data collection. Their willingness to share their stories and thoughts really made the investigation so much richer. Finally, I wish to recognize my family and friends' unconditional support by which I persevered all along this research trip thanks to their belief in my work.

I gratefully acknowledge the contributions of all of these people, without whom this research would not have been possible.

### VII. REFERENCE

- [1] F. Haddad and M. K. Alsmadi, "Improvement of The Hotelling's T2 Charts Using Robust Location Winsorized One Step M-Estimator (WMOM)," Journal

of Mathematics (ISSN 1016-2526), vol. 50, pp. 97-112, 2018

- [2] A. K. Lofters, M. B. Slater, E. Nicholas Angl, and F.-H. Leung, "Facebook as a tool for communication, collaboration, and informal knowledge exchange among members of a multisite family health team," *Journal of multidisciplinary healthcare*, vol. 9, pp. 29-34, 2016.
- [3] Mihailović, D. T., Mimić, G., & Arsenić, I. (2014). Exploring chaotic behavior and complexity within climate models. *Advances in Meteorology*, 2014
- [4] Petropoulos, F., Apiletti, D., Assimakopoulos, V., Babai, M. Z., Barrow, D. K., Taieb, S. B., ... & Ziel, F. (2022). A comprehensive overview of forecasting: theory and applications. *International Journal of Forecasting*, 38(3), 705-871.
- [5] Mishra, D., & Joshi, P. (2021, September). Machine learning applications in weather forecasting: A detailed analysis. In *Proceedings of the 2021 9th International Conference on Reliability, Infocom Technologies and Optimization (Trends and Future Directions)(ICRITO)* (pp. 1-5). IEEE.
- [6] Kosarkar, U., Sakarkar, G., & Gedam, S. (2022). Revealing and Classification of Deepfakes Videos Images Using a Customized Convolutional Neural Network Model. *International Conference on Machine Learning and Data Engineering (ICMLDE)*, 7th & 8th September 2022, 2636-2652. <https://doi.org/10.1016/j.procs.2023.01.237>
- [7] Kosarkar, U., & Sakarkar, G. (2023). Unmasking Deep Fakes: Advancements, Challenges, and Ethical Considerations. *4th International Conference on Electrical and Electronics Engineering (ICEEE)*, 19th & 20th August 2023, 978-981-99-8661-3, Volume 1115, 249-262. [https://doi.org/10.1007/978-981-99-8661-3\\_19](https://doi.org/10.1007/978-981-99-8661-3_19)
- [8] Kosarkar, U., Sakarkar, G., & Gedam, S. (2021). Deepfakes: A Threat to Society. *International Journal of Scientific Research in Science and Technology (IJSRST)*, 13th October 2021, 2395-602X, Volume 9(6), 1132-1140. <https://ijsrst.com/IJSRST219682>
- [9] Kosarkar, U., & Sakarkar, G. (2024). Designing an Efficient VARMA-LSTM-GRU Model for Identification of Deep-Fake Images via Dynamic Window-Based Spatio-Temporal Analysis. *International Journal of Multimedia Tools and Applications*, 8th May 2024. <https://doi.org/10.1007/s11042-024-19220-w>