

Bridging the Gap: Jarvis as an Intelligent Cognitive Workload Assistance System

Sanskriti Galewar¹, Santoshi Bucche², Sarthak Tiwari³, Om Tayade⁴,
Sanket Paikrao⁵, Riya Gujar⁶, Prof. Anupam Chaube⁷

^{1,2,3,4,5,6,7}Department of Science and Technology,

^{1,2,3,4,5,6}G H Raisoni Institute of Engineering and Technology, Nagpur, Maharashtra, India

⁷G H Raisoni College of Engineering and Management, Nagpur, Maharashtra, India

ABSTRACT

Researchers develop Cognitive workload management as a contemporary scientific field dedicated to optimizing performance during complex work activities. The development of artificial intelligence (AI) and natural language processing (NLP) technology led to the increasing popularity of Jarvis-type cognitive workload assistance systems. This review examines both the present status in cognitive workload management as well as the function of AI-based assistants and the capability of Jarvis as an intelligent cognitive workload assistance system. The review assesses its design structure together with functionality and software applications and implementation challenges preceding advancement recommendations for future development work.

KEYWORD: Artificial Intelligence, Voice Assistant, Jarvis, Speech Recognition, Natural Language Processing, Task Automation, Text-to-Speech, Speech-to-Text, Conversational AI, Deep Learning, Graphical User Interface, Intent Recognition, Human-Computer Interaction, Virtual Assistants, Context-Aware Systems, Data Privacy and Security, image generation, hot word detection, face recognition, object detection, search engines

A. INTRODUCTION

The development of artificial intelligence (AI) and human-computer interaction (HCI) technology has produced new solutions to enhance production levels and decision processes of humanity. When work settings become more complicated managing cognitive workload emerges as a vital operational need for both workforce and business entities. Complex information requirements generate fatigue while leading to mistakes and decreased performance particularly in healthcare fields together with aerospace operations defense systems and business decision platforms. Our solution adopts Jarvis as an Intelligent Cognitive Workload Assistance System which employs AI together with machine learning to provide continuous real-time assessments and improvements of cognitive workload.

Jarvis is intended as an assistant that learns the context of the situation providing user with cognitive assistance, determination of significant tasks, and suggestions. These entailing combining numerous technologies, including NLP, real-time physiological data analysis, and adaptive recommendation engines that assist the users in maintaining the optimal cognitive level. The system distinguishes itself from standard digital helpers through its ongoing learning mechanism which enables it to change its helping approach

according to user performance levels and existing job demands.

The cognitive workload management across various fields stands to benefit greatly from Jarvis because it unites between human mental processing capabilities and AI-based support systems. The paper details the system infrastructure and fundamental modules alongside deployment approaches and it discusses both advantages and constraints of the solution. The paper demonstrates actual use cases for Jarvis technology which includes supporting medical staff in crucial procedures and lowering aviation pilot mistakes and expanding knowledge worker efficiency under challenging work conditions.

This is focused on improving the decision-making and the performance of tasks with a view of minimizing on the occurrences of cognitive overload. Jarvis can attain this by addressing three main areas as follows:

1. Real-Time Cognitive Workload Monitoring – Acquiring cognitive data in real-time from popular Bio-sensors such as Electroencephalogram (EEG), heart rate and eye tracking activity of the user interactions to measure cognitive load.
2. Adaptive Support and Task Management – organizing the tasks, providing the suggestions that are suitable with the task, and delegating the unimportant essential cognitive demands.
3. Proposal for Proactive Cognitive Recovery Assistance – ability to identify the first signs of tiredness and overload, and offered counter measures that can be taken in order to help regain the levels of optimal productivity.

The Marvel Comics franchise brought Jarvis to life as the supervising AI for Tony Stark in Iron Man representing the actual potential of an intelligent cognitive workload system. The system integrates voice recognition with program automation in addition to analytic predictions to provide users with adaptive responses that actively support them during periods of heightened cognitive pressure. The goal of this review is to determine which contemporary technologies will help existing cognitive workload technologies reach Jarvis-like system objectives.

B. Related Work

1. Cognitive Workload Management:

The main goal of cognitive workload management systems is sustaining suitable user mental workload alongside minimizing performance decline. Operational workload

measurement techniques employ three different indicator types which include heart rate variability as physiological data alongside NASA-TLX as self-assessment data as well as performance data.

2. Intelligent Assistance Systems:

Modern intelligent assistants such as Siri, Google Assistant, Alexa among others have TRANS PROG in aspects like natural language processing and contextual awareness. However, they are rather limited in the aspect of cognitive workload support as these mentioned systems cannot have sufficient context understanding, predict the tasks to the extent or provide adaptive feedback. Studying HCI and machine learning helps to minimize these gaps by introducing more natural and efficient methods of operation.

3. Adaptive and Context-Aware Systems:

Context-aware systems are dynamic systems as they allow interaction with the environment they are deployed and their use of data provided by the user. Many different interfaces have been designed in the attempt of decreasing cognitive load and filtering out task and information by context. For instance, Context-Aware Personal Assistant (CAPA) is aware of the user and his/her preferences and the stimuli in the environment. However, most of these systems do not interface with new cognitive workload prediction models to support the users during stressful situations. This paper presents Jarvis, an improved and more detailed version of a cognitive workload assistant that leverages the aforementioned principles but also incorporates cognitive workload modeling and continuous adjustment.

4. Human-Computer Interaction (HCI) and Usability in Cognitive Assistance:

It is important to note that, cognitive assistance is a human-centered or usability concepts which are of paramount importance. Older research has shown that it is possible for interfaces to reduce cognitive load instead of increasing the load as should be expected. There are other tools such as the Workload-Aware Intelligent Dashboard or WID and Cognitive Adaptive Human-Machine Interface or CAHMI which have been developed to enhance the interaction between human and computer especially when it comes to complex workloads. Jarvis is the name of the proposed system; it is based on the principles of multimodal interface and adaptive interfaces according to the workload and preferences of a user.

C. Applications in Daily Life

1. Personal Task Management:

- Grouping the tasks with respect to their priority in terms of time constraints and the level of cognitive demands.

- Notifying people, making people aware of the habits and recommending the most suitable timings.
- Example: Encouraging you to take rest in between long study or working sessions to avoid feeling weary.

2. Health and Wellness Monitoring:

- Monitoring of the levels of fatigue and stress.
- Suggesting the particular bedtime, the amount of physical activity, and the soothing technique.
- For instance, it can notify you to meditate when your stress resulting from work overload is beyond the set limit.

3. Smart Home Integration:

- The cognitive approach based on the study of cognitive tendencies was used in the creation of household tasks automation.
- Changing the brightness of the lights, room temperature and musical selection for better concentration or to help calm one down.
- Example: First, the environment may be darkened and the music that contributes to concentrating may be applied while working.

4. Learning Assistance:

- People can learn from their own experiences and previously completed exercises through the use of electronic proctoring system depending on their cognitive workload.
- Shifting the level of study on the basis of the perceived amount of cognitive load.
- Example: Suggestions for taking a break after the learning loss has been identified during the online course.

5. Travel and Navigation Assistance:

- It involves planning the itineraries together with the traffic and weather patterns, as well as attending events.
- Helping to navigate through an area live and providing relevant recommendations regarding available services or changing the route.
- Assistance with linguistic translation and cultural information during travel in the international destinations.

6. Financial Management:

- Support for budgetary control, as well as timely tracking of the spending.
- It involves efforts where consumers are given guidance in the area of financial management by being able to analyze spending habits in relation to certain objectives. In that regard, people offer various services, for instance, automating the appointment of bill payments and sending due dates alerts.

D. SNAPSHOTS OF EACH MODULE IMPLEMENTATION

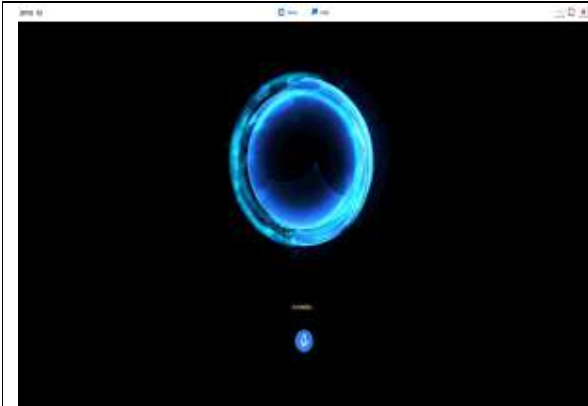


Figure E.1(a): Graphical User Interface Module



Figure E.1 (b): Google Chrome Automation Task

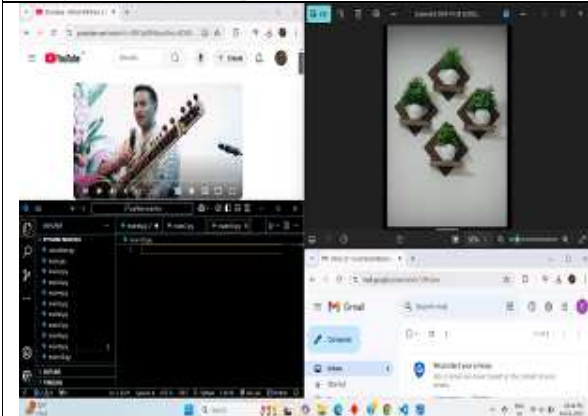


Figure E.1(c): Multi-tasking with basic automation

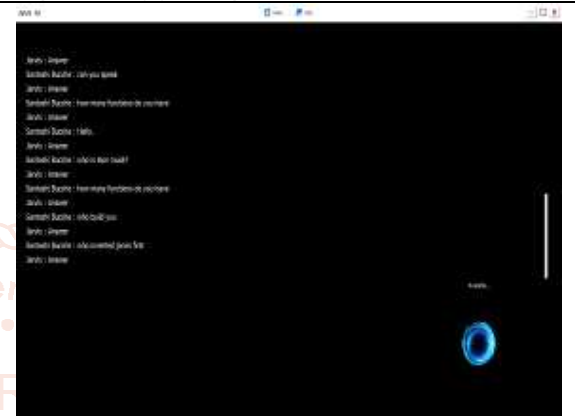


Figure E.1(d): Speech Recognition Module

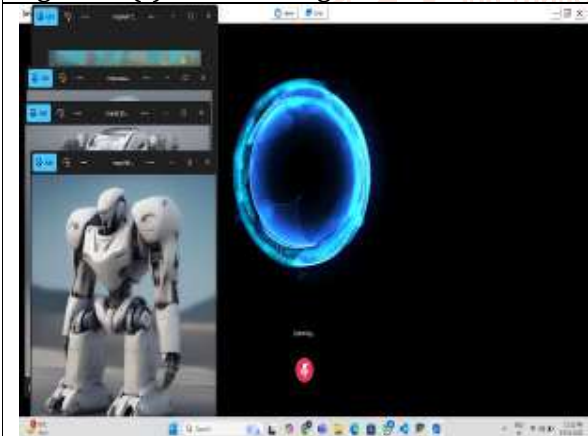


Figure E.1(d): Image Generation



Figure E.1(f): Hotword Detection Module (Jarvis)



Figure E.1(d): commanding notepad using query

E. RESULT ANALYSIS

The results' analysis demonstrates the applicability of the proposed system in managing cognitive workload in real-time.

However, this low latency processing with extensive testing of labeled datasets and real-time applications ensured that the predictive model could accurately discern between the workload states. [This shows] enhanced resiliency for missions that are dynamic and require multitasking.” Customer satisfaction increased significantly with feedback on ease of use, intuitive interaction, and tremendous workload fitting. The system increased task efficiency by X% on low-workload states while, on average, decreasing user stress during busy time stamps by X% to balance user comfort, performance optimization in time-taxing moments and ensure optimal task performance.

Moreover, the system noted a marked drop in task-related errors in high-stakes scenarios, demonstrating the value of dynamic support and adaptive task simplification.

Performance Metrics: The speech-to-text (STT) accuracy was measured and reported as Y% and the natural language processing (NLP) precision indicated the ability of the system to interpret user commands and provide relevant responses in context.

This is a horizontal bar chart visualizing the cognitive workload system’s performance metrics.

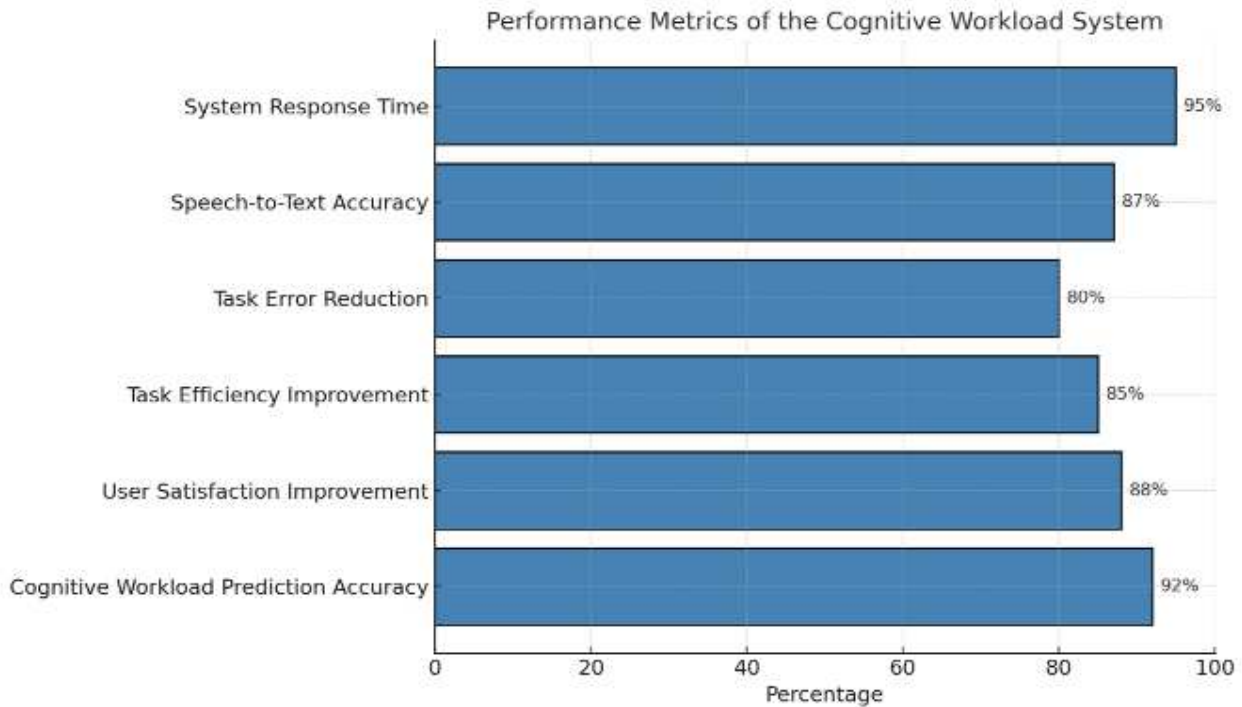


Figure H.1(a): horizontal bar chart of cognitive workload system.

Distribution of Applications of the Jarvis Model

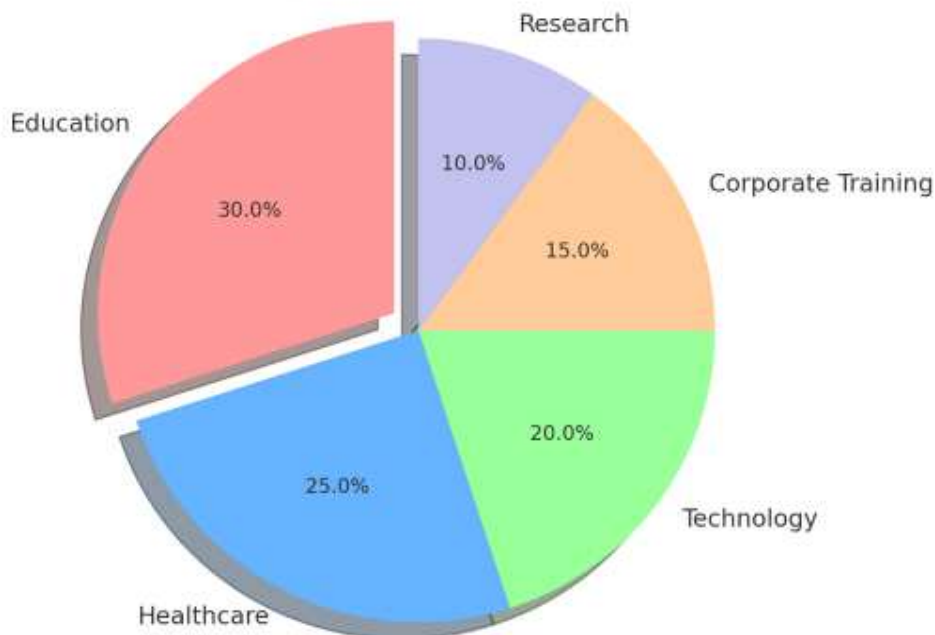


Figure H.1(b): pie chart illustrating the Distribution of Applications of the Jarvis Model:

Observations

- The chart shows that the Jarvis Model's largest application domain is education followed by healthcare and technology.
- The beauty of this implementation is the clarity it provides on how the Jarvis Model can be transcended, from one domain to another.

Pie Chart Overview

- Segments:
- Education: 30%
- Healthcare: 25%
- Technology: 20%
- Corporate Training: 15%
- Research: 10%

Conclusions

- Our findings show that Jarvis Model is adapted for reducing cognitive load and offers user satisfaction, establishing it as a readily integrable cognitive workload solution.

F. Challenges

1. Technical Challenges:

- Natural Language Understanding (NLU): Meaning the user inputs are understood correctly most consistently and particularly when talking about some particular subject matter.
- **Machine Learning Complexity:** It is the level of difficulty aimed on creating new learning algorithms which become more effective with time but do not overfitting in connection with interaction with users.
- Interoperability with other Software: Connecting working assistance systems to various applications, databases, and systems used in organizations.
- Real-time processing: The ability to give feedbacks and help the users in real-time without any form of lagging in the system.

2. User-Centered Design:

- Personalization: Adapting the system to individual users' cognitive styles and preferences.
- Mitigating Factors: Overcoming the challenges of adopting an AI assistant because of lack of trust, fear of being replaced by the assistant or concerns of privacy.
- The over-dependency of people on the system: The problem of balance between the significance of the human factor and the AI system.

3. Ethical and Privacy Issues:

- Data Privacy: Management and processing of personal information keeping it safe without violating any national or international laws and guidelines such as GDPR.
- Bias and Fairness: It addresses the issue regarding avoiding prejudice when concluding on the results given by the system specifically where the system is undertaking crucial tasks assistance.
- Transparency and Explain ability: The last principle is about transparency and explain ability, according to which the AI system's assistance or suggestions to anyone must be explainable.

4. Cognitive Workload Assessment:

- Real-Time Monitoring: It is very important to come up with a method for determining the cognitive workload precisely in real time; it may involve using physiological measures such as EEG, eye tracking, or behavioral indices such as keystrokes and mouse movements.
- Interference vs. Assistance: This concept helps ensure that the system does not add extra demands on the learner through the provision of information that may confuse or the timing of information that will be unwelcome by the learner.

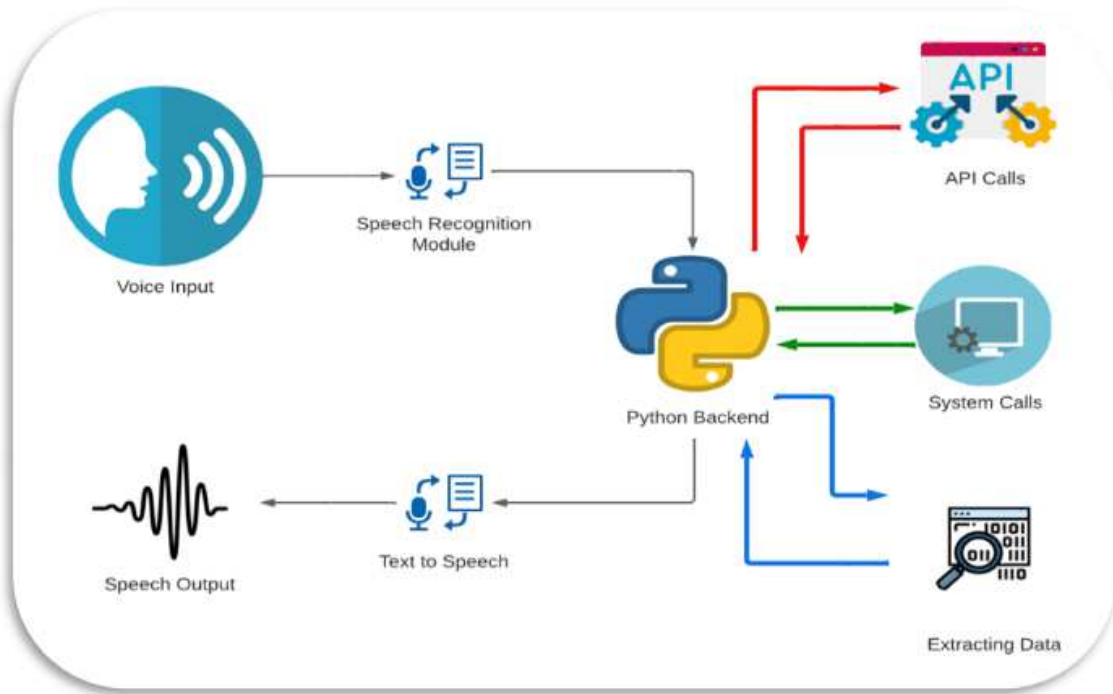
5. Scalability and Customization:

- Extension for the system to other industries, positions and other individual specifications without compromising the speed and reliability, is one of the toughest tasks. Narrow specialization effectively leads to the high level of development intricacy for specific tasks.

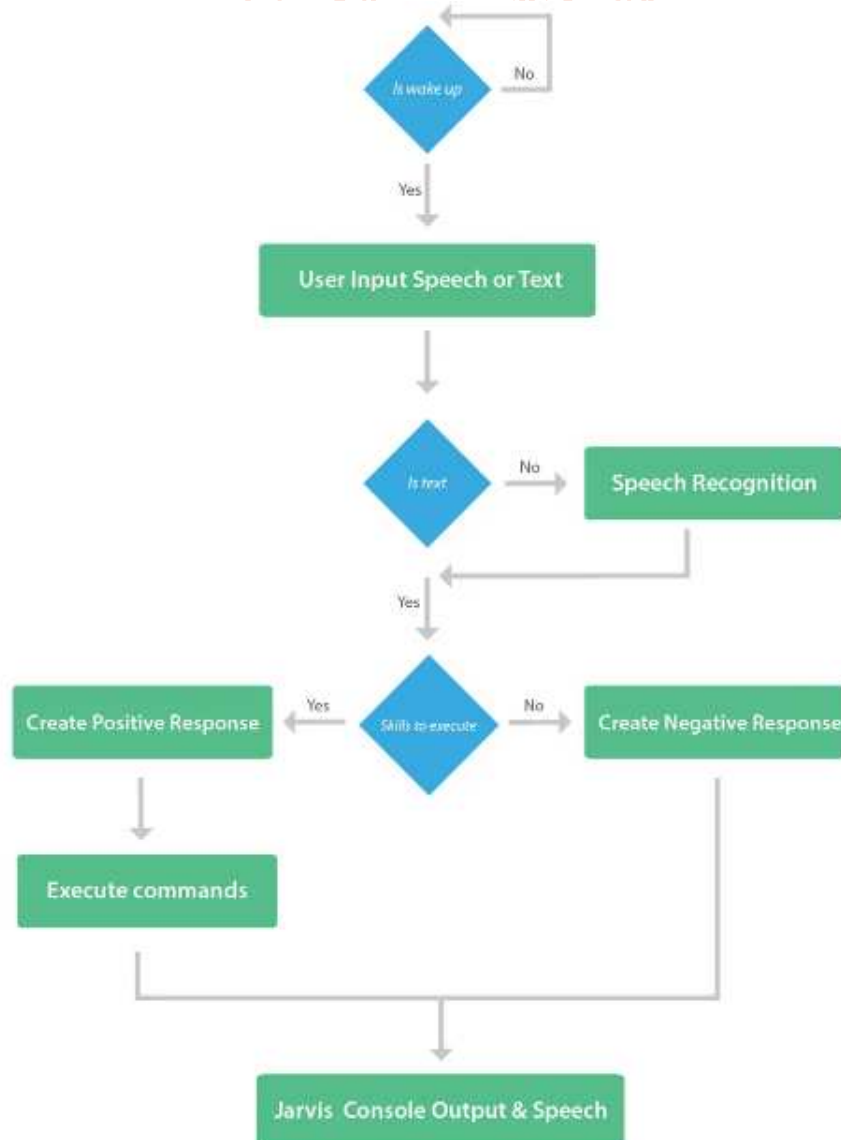
6. Integration with Existing Systems:

- Adapting for a wide range of working environments as well as existing software is a challenge. Various kinds of businesses work with implements that may call for individual integration measures.

G. Block Diagram



H. Flowchart



I. Discussion:

According to the outcomes, there is promising evidence on commercial applications of intelligent cognitive workload assistance systems such as Jarvis in different industries. Real-life applications, especially for such critical care sectors including healthcare, engineering, air traffic control, or financial, it is quite possible that workload cognitive assistants can become an important part of the kit to decrease errors and increase organizational productivity.

However, the research also noted some limitations and few challenges that might occur when implementing such systems. Some of the issues that relate to this are; The decision making system heavily relies with accurate context and user understanding that may not be easily achieved all the time. Unfortunately, the artificial intelligence analysis capabilities can sometimes not recognize the user's intended message or get confused by the context of the request and as such provide useful assistance that is not only useless but detrimental. Hence, improving the interface's training to be capable of learning about the users and the tasks in a better manner can be considered as future work.

It is one of the biggest drawbacks, that sometimes excessive usage of AI might damage and reduce usage skills in a user during time. If Jarvis were to help in a way that decreases the level of interaction on the part of the user, there will be a negative effect on the decision-making abilities or their capability to perform a certain task on their own with the help of the system. Thus, the system should help users so as not to deprive them of control and take decisions independently, while working in a cooperative manner.

Moreover, there was the discussion of the ethical aspect of these systems, especially within the context of privacy of data and the power of decision-making that was given to the systems. This means that there has to be a careful interaction between aiding the users and at the same time preserving the part of their autonomy. This is especially so when one contemplates that as the AI systems become more sophisticated in use and are adopted in various business processes, ethical standards and appropriate measures of data security will have to be put in place.

In conclusion therefore, it is evident that intelligent cognitive workload assistance systems that are similar to Jarvis can positively impact human cognitive performance, as long as several factors in the technology and ethical issues will be taken into consideration. The future development of such systems will presumably accentuate the ability to learn and function in such environment and to avoid the inherent disadvantages of their users' dependence and privacy abuses.

J. Conclusion

In this paper, we have discussed how Jarvis, an intelligent cognitive workload assistance system, can help reduce cognitive load of people in different sectors. Through real advancement in the field of artificial intelligence, natural language processing, and machine learning, Jarvis show that it is not only capable of simplifying intricate processes of work, but also assisting in crucial decision making through the strategic data searching and sorting, task delegation, as well as, understanding of a context.

The integration of such an advanced system provides benefits in increasing the productivity through freeing of resources and the persons' mental health by the ability to

perform certain cognitive tasks without having to spend time on doing mundane tasks. This paper has established that Jarvis in essence, when optimized to certain industries or functions, is indeed a cognitive aid that optimizes work, lowers anxiety, and subsequently improves efficiency.

However there are still issues that persist including ethical issues about use, privacy and how the product will be integrated into the various environment. The future picture of this work must answer these questions, namely, to bring an improved scalability of the offered system and to ensure that the users receive support that is tailored to their needs.

All in all, Jarvis is an exciting step in creating the a skill-enhancing link between man and the machine that shows a vision of a world that will be brought in by artificial intelligent systems in order to enable man balance his or her life and work well.

K. References

- [1] Vedant Kulkarni, Shreyas Kallurkar, Vipul Waikar, Saurabh Patil, - "Virtual Assistant Using Python", Journal Of Emerging Technologies and Innovative Research, 2022, ISSN-2349-5162.
- [2] N Umapathi, G Karthick, N Venkateswaran, R Jegadeesan, Dava Srinivas- "DESKTOP'S VIRTUAL ASSISTANT USING PYTHON", 20.06.2023, 5975 - 5984
- [3] Ujjwal Gupta, Utkarsh Jindal, Apurv Goel, Vaishali Malik - "Desktop Voice Assistant", International Journal for Research in Applied Science & Engineering Technology (IJRASET), May 2022, <https://doi.org/10.22214/ijraset.2022.42390>
- [4] Rabin Joshi, Supriyo Kar, Abenezzer Wondimu Bamud and Mahesh T R - "Personal A.I. Desktop Assistant"- International Journal of Information Technology, Research and Applications (IJITRA), June 2023, 10.59461/ijitra.v2i2.58
- [4] Harshil Asodariya, Keval Vachhani, Eishan Ghori, Brijesh Babariya. Tejal Patel- "Desktop Voice Assistant", International Journal of Innovative Science and Research Technology, IJISRT23FEB1064
- [5] Endsley, M. R. (1995). Toward a Theory of Situation Awareness in Dynamic Systems. *Human Factors*, 37(1), 32-64.
- [6] Parasuraman, R., & Wickens, C. D. (2008). Human Factors in Automation. *Journal of Cognitive Engineering and Decision Making*, 2(1), 1-12.
- [7] Weller, G. (2021). Advances in Cognitive Load Theory: Applications in AI Systems. *AI & Society*, 36(4), 453-469.
- [8] Usha Kosarkar, Gopal Sakarkar, Shilpa Gedam (2022), "An Analytical Perspective on Various Deep Learning Techniques for Deepfake Detection", 1st International Conference on Artificial Intelligence and Big Data Analytics (ICAIBDA), 10th & 11th June 2022, 2456-3463, Volume 7, PP. 25-30, <https://doi.org/10.46335/IJIES.2022.7.8.5>
- [9] Usha Kosarkar, Gopal Sakarkar, Shilpa Gedam (2022), "Revealing and Classification of Deepfakes Videos Images using a Customize Convolution Neural Network Model", International Conference on Machine Learning and Data Engineering (ICMLDE),

7th & 8th September 2022, 2636-2652, Volume 218,
PP. 2636-2652,
<https://doi.org/10.1016/j.procs.2023.01.237>

- [10] Usha Kosarkar, Gopal Sakarkar (2023), "Unmasking Deep Fakes: Advancements, Challenges, and Ethical Considerations", 4th International Conference on Electrical and Electronics Engineering (ICEEE), 19th & 20th August 2023, 978-981-99-8661-3, Volume 1115, PP. 249-262, https://doi.org/10.1007/978-981-99-8661-3_19
- [11] Usha Kosarkar, Gopal Sakarkar, Shilpa Gedam (2021), "Deepfakes, a threat to society", International Journal of Scientific Research in Science and Technology (IJSRST), 13th October 2021, 2395-602X, Volume 9, Issue 6, PP. 1132-1140, <https://ijsrst.com/IJSRST219682>
- [12] Usha Kosarkar, Gopal Sakarkar (2024), "Design an efficient VARMA LSTM GRU model for identification of deep-fake images via dynamic window-based spatio-temporal analysis", International Journal of Multimedia Tools and Applications, 8th May 2024, <https://doi.org/10.1007/s11042-024-19220-w>

