

MahaPathy: The Super-Excellent System of Medicine

Sumeru Ray (Maharshi MahaManas)

Department of Versatile Science Research, MahaManan Kendra, Kalna, West Bengal, India

ABSTRACT

The abstract of MahaPathic treatment procedure:

'MahaPathy': The super-excellent system of nanomedicine for complete treatment. 'MahaPathy' – this new system of medicine is mentioned briefly as 'MPathy'.

To cause to disappear –to destroy the disease-poison / toxin or the diseased bio-cells by just its contrary existence (like antimatter) –is the fundamental thing of this system of treatment. At present, the treatment is done by the contrary existence of patient's disease-poison /toxin or sick-cells or saliva of the mout, or urine – collecting that material from patient's body, –the contrary existence is made by a special procedure.

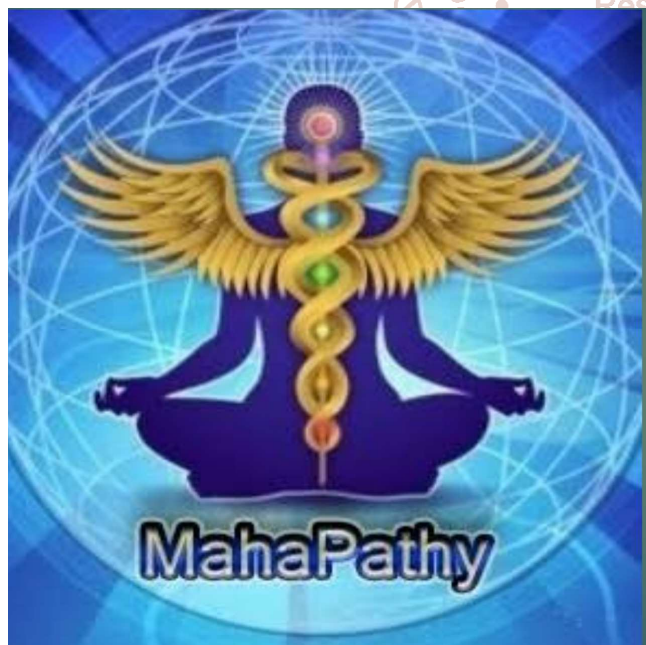
KEYWORDS: MahaPathy, MPathy, Nanomedicine, New system of medicine

How to cite this paper: Sumeru Ray "MahaPathy: The Super-Excellent System of Medicine" Published in International Journal of Trend in Scientific Research and Development (ijtsrd), ISSN: 2456-6470, Volume-5 | Issue-5, August 2021, pp.2299-2308,



URL:
www.ijtsrd.com/papers/ijtsrd46300.pdf

Copyright © 2021 by author (s) and International Journal of Trend in Scientific Research and Development Journal. This is an Open Access article distributed under the terms of the Creative Commons Attribution License (CC BY 4.0) (<http://creativecommons.org/licenses/by/4.0>)



INTRODUCTION

The fundamental words: Different types of disorders and/or deformities –sick conditions of different characteristic groups of cells of different parts of living body are expressed to us in form of different type of diseases or symptoms of diseases.

Here, 'disorder' is –the exception of the cell's normal action (functional disorder) or indiscipline. And

'deformity' is –the change of normal structure of cell –change of constituent parts of body-cell.

Poison is the cause of all these disorders –deformities. 'Poison' ward is used here for extensive types of meaning. Poison is that –which is capable of causing disorder –deformity in body cell. Here harmful Viruses and bacteria are also considered as poison or toxin. Different types of poisons in different amount, depending on the condition of living body, cause different disorders and /or deformities. Again, the same (in reduced amount) quantity of any poison, in case of all and in case of same creature, cannot cause same action of poisoning, all the time.

In case of creating –the action of poisoning by any poison, depending on the condition of living body, at different times, and in case of different living body, the minimum intruding (entrance) quantity of poison is not same.

But almost all things in great quantity –of this material and energy world, –are like poison to the creature. Action of poisoning may take place in the living body, by excessive use or intruding (entrance) of almost all energies – matters. Those which are not classified generally under poison list, –they also act

like poison at different high quantity, in the living body.

That, which is generally very delicious or nutritious food or without which, even a moment, cannot be lived, by the creature, –that same in excess amount, grows as deadly poison for the creature. Generally in small quantity, whatever acts like poison, we all think those, to be poison. Besides different form of harmful energies –elements or matters, besides plant oriented or chemical poisons, we are being much harmed or diseased by mental poison. Besides these, as a result of excessive hard work, torture, hurt, intemperance in eating, mental pollution etc, action of poisoning may take place in the body.

Some of these disorders –deformities of cells are acquired by us (consciously or unconsciously), and some we inherit from heredity, –actually which was acquired by our ancestors. Habitually, as per capability of the body, it is always trying to make inactive, all these harmful poisonous substance. Along with that, there is arrangement, of replacement of destruction caused. Body's preventive system – defense system against the poison, –if successful in this case –the body recovers (cured) and if fails, the body gets sick.

Within the body cells, different levels of excitement, irritation or inflammation takes place, when comes in contact with different quantity of different types of poisons. As per the capability of body's preventive – defense system, it promptly gets ready, for its eradication. As a result of irregularity, torture, if excessive or abnormal loss or destruction takes place of the very necessary elements or matters of the body, then also sickness is seen. Moreover, the cause behind loss or destruction may be the sickness. If any constituent part of body is lost –generally the rest of the parts gets excess. Action of poisoning may be created, from this excess. Again, the vacuum and weakness created as a result of loss, from that, – excess of air is created in the body. Also excess of air creates the action of poisoning –unhealthiness.

Similarly, because of much sunlight– heat or taking food enriched with protein or calcium, in much quantity, more bile secretion takes place. Action of poisoning may take place in the body, from this excess of bile. Again, this excess of bile –behind this also, may be sickness. From action of poisoning loss and excess both take place. Also action of poisoning may be created from loss and excess.

Moreover, such some things (matter, element or energy) are there, any special type of action of poisoning is not seen of those in material form or

gross quantity. But in subtle form or in subtle 'CISE' or 'CSE' (discussing later on) –they act or cause action of poisoning.

Some poisons are of strong active power, among these, many poisons lose their working capacity in short time, these are short acting poisons. And some poisons are long acting; –these act in slow speed, for long time. Some poisons cause the permanent deformity of body cells, of the creature, and act hereditarily generation after generation.

Every day, in the living body, birth– death of many cells continues. Immediately after the death of sick cells, if the body would have been free from its sickness, then no problem would have been there. Many sick cells –giving birth to many sick cells before their death, –then only they depart. As a result, sick cells maintain their sickly continuity – hereditarily, generation after generation. Dead cells after flowing with the blood –goes out from the body, through the urine, according to arrangement of the body-system. Not only dead cells, in the defense system of living body, –disease preventive and remedial Bio-chemicals, which have been defeated after fighting against poison or won, have been able in the remedy of sickness, of the body cells or unable, that deformed bio-chemicals also along with the urine of the creatures, go out from the living body in accordance with the body-system.

Besides this, through the urine– is passed out some parts of the destructive poison –which the body system is able to throw out from the body. And some more parts –which the body system is able to make inactive and deformed. Also some parts of sick cells are there, there are cell stool and surplus and excreted (given out) cell food, etc.

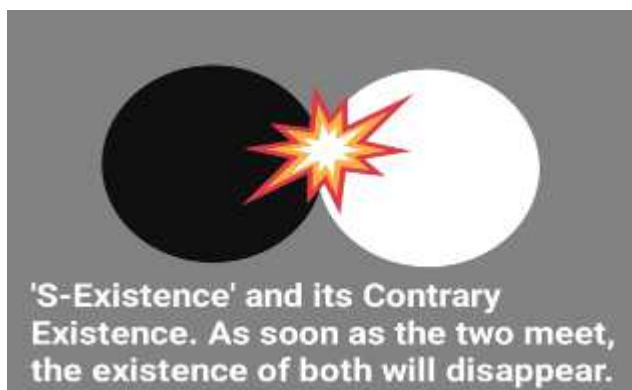
Now, if we are able to, anyhow make inactive – reduce, the different intruding poisons in the body, if we are able to make return the deformed cells to the normal condition, if we are able to make the body defense-system active– powerful –refreshed, we will be able to be disease free –able to get soundness of body.

If in any way...

In any way, if contrary existence or antimatter of bodily poison and of sick cells of the body is prepared– and made to enter the body, then bodily poison and sick cells or sick part of the cells will disappear or destroy. Then with new enthusiasm, the disease free body, refilling its shortage –due to wear and tear, will be able to get real well-being through reformation. Being free from sickness expressing (disease) symptoms, mental symptoms– conduct-

behaviors etc, everyone will be able to be well – strong bodied and minded human being.

To understand this medical procedure properly, one must first understand about 'S-Existence and its Contrary Existence'. Please read the separate article written on it.



S-Existence is another existence of everything

'S-Existence' is another existence of everything. Lack of appropriate word has caused to mark or name this unearthly existence– 'Sumeru-Existence', briefly– 'S-Existence'. This 'S-Existence' identity is too much subtle –unperceived –unfelt.

From fundamental particle to every element, – matter and energy have two different existences in its form. The formations of matter or element, components, quality, energy etc all are present in its 'S-Existence'. Generally, this 'S-Existence' is inseparable mixed with material existence.

S-Existence and its Contrary Existence

'S-Existence' is another existence of all beings. Lack of appropriate word has caused to mark or name this unearthly existence– 'S-Existence'. This 'S-Existence' identity is too much subtle –unperceived –unfelt.

From fundamental particle to every element, – matter and energy have two different existences in its form. The formations of matter or element, components, quality, energy etc all are present in its 'S-Existence'. Generally, this 'S-Existence' is inseparable mixed with material existence.

In case of living body it is same; it also has 'S-Existence' –unearthly body or supernatural body. 'S-Existence' of mind, – vital energy and sense etc are also present in the supernatural body.

With matter and energy, their 'S-Existence' is also mixed inseparably. With support of material body or matter, mixed with it– its 'S-Existence' is present. Without 'S-Existence' any matter– anything cannot be there. If there is change in matter or body's shape –quality, similar change takes place in its 'S-Existence'. This supernatural body or matter is a true

copy of material body or matter, which is not a known matter –is an unknown and different matter –is made of unearthly matter.

When there is an action and reaction between a matter and other matter, then there takes place similar action and reaction and change between their 'S-Existence'. When a matter comes into contact with its antimatter, –both the matters as soon as the union of their 'S-Existences' –both loses their independent existence. As a result of this union, can occur the dispersion of energy, and can be created different kinds of particles, new matters –elements and energy –depending on the condition and velocity of the union.

When any matter or particle of matter has repeated collisions with other matter or matter-particle, then their S-Existences will put a contrary impression* on each other's 'S-Existence'. Everyone's 'S-Existence' will carry the contrary impression of other 'S-Existence', till the time– the carrier matter or matter-particle and along with their S-Existence's disorder– deformity or change takes place.

* This contrary impression is not like two dimensional stamp-print or reverse-print. This contrary impression is a thorough –three (or more) dimensional impression of super (natural) existence which is externally inactive and just opposite impression existence of 'S-Existence' of any material thing.

From that contrary impression of 'S-Existence' (CISE) which is a burden to the matter's 'S-Existence', many more copy of that can be produced, –then only if repeated collisions takes place with the matter or element-particle carrying that impression and similar or other matters or element particles. But in this case, contrary impression of that impression of 'S-Existence' will not be made. Depending on other matter's 'S-Existence', this contrary impression of 'S-Existence' (CISE) is merely a (material or supernatural) bodiless impression. As it is not having its own body, it is unable to impress any contrary impression on others. As a result of collisions, from that– many similar copies can be made, but gradually those copies will get more and more fineness or subtlety. From one particle to other particle, from that to other –if in this way gradually that copy is made, then gradually the copy of 'CISE' will become finer to finest.

Usually this 'CISE' is inactive –quality less. But anyhow if this 'CISE' enters the living body, then by the help of the software of bio-system, is able to get a supernatural body.

The 'CISE' on entering the living body, reaches the particular center of brain with help of nervous system. There with the special work capability of the software of bio-system, that copy of impression (CISE) gets the supernatural body. That is to say, 'CISE' turns into contrary super (natural) body or existence. Then it is not merely inactive impression, an active supernatural (body or matter) existence –endowed with quality and character –properties. The birth that it took from matter or element as 'CISE', and then it becomes contrary S-Existence of that matter or element.

Then, that contrary S-Existences spread through the circulatory system and nervous system– throughout the creature's whole body –similar to defense force. In search of enemy– culprit or evildoer those who are causes of diseases, –thoroughly searching the whole body, meeting its contrary existence –immediately it jumps on that. As a result, disappear the identity of both.

The subject is absolutely new, so let's repeat in short, –when the CISEs come into contact with the body's nervous system, –in electrical speed, they reach a particular center of the brain. There, with the help of bio-system's software, the CISEs get supernatural bodies or 'S-Existence' –according to their quality –nature –property, everyone. From there, following the defense system of the living body, –they spread out the sickly parts of the body or throughout the body –in search of alike-contrary thing which are poisonous –harmful for body.

If the nervous system and the software of the body is weak, undisciplined or incapable, that 'CISE' may not be able to get a super (natural) body or existence and not be able to follow its working role properly.

After entering of 'CISE' (of anything) in the body, if that 'CISE' converts to 'S-Existence' with the help of body-mechanism and if that 'S-Existence' does not meet the contrary existence in the body, –in that case if the number of S-Existences are too many, then they are the contrary existence of which matter or element, who were able to create as like action of poisoning in the body, these (contrary) S-Existences are able to create contrary or opposite symptom of poisoning of that thing. For example, if main thing or matter is able to create constipation, then its contrary 'S-Existence' (about which is discussing) will create diarrhea.

But if these S-Existences' number or amount is less in poisonous limit, then they will do similar activity, but it will be not so acute –not be unhealthy. Rather relieving constipation –will help to clear the bowels. That will work like mild purgative.

This action will not be stable. The cause which created the constipation, that cause will not be stopped in this case.

If the number of (contrary) 'S-Existence' is too low, then any action may not be felt. Except it, cause behind the constipation (or other incident) if there is present any strong reason or poison, in that case, the 'CSE' may not be successful in its work. But if this 'CSE' comes in contact with a thing which is similar in every respect (form –quality –character etc) in the body, then action of poisoning can be created depending on their number or amount.

In the body, when 'CSE's are able to do their own work, at the end of work –end their longevity. But those who do not get the opportunity of work, they slowly go out from the body through different paths or outlets. But everyone has its own life period.

Matter is material form of its 'S-Existence'. Any matter can never be without its 'S-Existence'. In case of energy, it is same. But the 'S-Existence' in some cases, without its material form, that is without the material body– able to remain, depending on some unearthly things. If any 'S-Existence' meets with its (exact) contrary 'S-Existence', the identity of both disappears. Along with that, if they have the material identity or existence, that also destroys.

Just like its material body, this 'S-Existence' is made by combination of quality-full unearthly particles. Atom and its inner energies and particles, fundamental particle and all other particles have 'S-Existence'. Every particle of matter or element has the similar 'S-Existence' –present in it.

The 'CISE' that entering the body– after getting the similar 'S-Existence', connecting with the harmful contrary existence, –both disappeared and destroyed. –This is the principle of 'MahaPathy' medicine's recovery procedure. I shall make an acquaintance with 'MahaPathy' next time. MahaPathy (briefly MPathy) –the super excellent system of medicine came into existence based on this theory.

If repeated collisions takes place between two molecules or particles of similar nature and quality –for some times, –does not produce contrary impression on each others 'S-Existence'. No particle accepts its contrary impression –does not accept its contrary impression on it. Here we have to keep in mind, (contrary) impression of 'S-Existence' (CISE) and 'S-Existence' –not same.

Now what will happen, if bodily enemy or poisonous matter or anything causing the action of poisoning –instead of being exact contrary of medicine if it is partly contrary –then?

Contrary 'S-Existence' (CSE) in medicine form (produced from CISE), after searching in the body, if does not meet its exact contrary existence, meets any partly (largely) contrary existence, then also it jumps to get united –in extreme attraction of union. In that case– depending on both's energy, amount, quality and strength along with body's condition of that time, can cause various incidents. Can occur partly alleviation or partly cure. If capable, the rest of part–body can manage oneself. Result of union can create–new matters –particles, and dispersion of rays can take place at different levels.

Except it, if any harmful poisonous germ is present in body and be attacked by that medicine, then it, for the self-defence, can assume very violent angry-looking, and can create indiscipline in bodily system. Or by escaping, can go exterior portion of the body like skin eruption. Or can try to self-hide, just like the snail.

Another thing is, if contrary impression (CISE) of any matter or element is applied repeatedly on any sensitive person, in that case, action of poisoning can take place and symptom of that poisoning can be seen. Those (medicine form) CISEs after becoming 'S-Existence' in the person's body, if they do not meet the contrary impression or contrary 'S-Existence', then also they (because of their majority) can create action of poisoning by themselves.

After any poison enters the body, medicine (CISE) prepared from that poison, at many times– is incapable of making that poison inactive. One of reasons of this is– many times, after any poison enters the body, connecting with other poisons or things present in the body, –that poison takes different form. For this reason, same poison takes different form in different bodies. As a result, the medicines (CISE) created from that poison is incapable of making inactive –the same poison. Then that has to be made inactive by any other medicine.

But anyhow, if the (mixed or unmixed) poison, is collected from body, and medicine (CISE) is made from that, –if that medicine is entered into the body, then that poison becomes inactive.

Except that, any poison, after entering the body, gradually changes take place in its form –quality –nature etc with the passing of time. The contrary 'S-Existence' of that changed condition's poison can make this changed poison– appropriately inactive (within the body).

The noticeable thing is– due to eating some amount of calcium –along with other symptoms, the secretion of bile from gall bladder will increase and with it– the temperature of the body will increase. But the

medicine (CISE) prepared from that calcium, as a result of eating a lot of that medicine repeatedly, –the symptoms appeared in the body, that is opposite (symptoms) to material calcium. How it happens?

The happening is–, in the body, the particles of contrary 'S-Existence' (CSE) of calcium destroy the equal amount of calcium particles of the body. As a result, deficiency of calcium takes place, in the body. The contrary S-Existences (in a large amount) of calcium particles– create that kind of action of poisoning– in the body that is just opposite symptom of material calcium.

If that CSEs are not able to meet with similar or almost similar minute– contrary existence (matter or element), in the body, or remain some quantity –after meeting with contrary existence, then they create action or action of poisoning of different degrees – depending on their existing amount in the body.

If there is present –from before, any matter or element –endowed with similar action of poisoning, –that is to say, if similar action of poisoning is all ready present in the body, in that case, by their united action of poisoning– intense action of poisoning takes place –in the body. In such a condition, to remedy this intense action of poisoning, the defense system of the body– creates more quantity of antidotes or antitoxins. As a result of that, the poison produced from medicine, along with former poison –both are destroyed or disappeared. Besides, as medicine form 'CSE' has no material body, –the span of its life is finished in a short time.

Evidence:

If Kirlian photography is true then evidence of this theory can be found largely in Kirlian photography. The whole picture of a leaf can be seen in Kirlian photography even after the leaf of a tree has been cut in half.

Preparation of medicine:

This medicine is made in the form of trituration mixing any other substance with the main ingredient through special machines. This means that the medicine is made by repeated mixing and friction method.

About the treatment of MahaPathy:

In this treatment, the selection of medicine is not of so problem, the main material of preparing the medicine is collected from the patient. Separate medicine for every patient –which is prepared only for that specified patient and applied only for that patient. However, if there are clear symptoms of similar toxicity in another patient, then it will be possible to cure him/ her with the same medicine.

In case of difficult and chronic disease, where almost whole body and mind is attacked by poison of disease, usually in that case, medicine is prepared from patient's saliva or urine or abnormal discharge caused by the disease. The case in which poison of disease is confined within any organ or area, in that case, medicine is also prepared from sick cells of that area. Besides, in this treatment –medicines are also prepared from different type of abnormal discharges which are expressing sickness and in which may be the poison of diseases.

In case of chronic disease, when symptoms of disease are generally severe or acute, then only, it is proper time to collect saliva or urine or other abnormal discharge or secretion –for preparation of medicine. In maximum cases, in acute stage (of chronic disease) than latent stage, –the poison of disease is present more in patient's urine. But in very acute or serious stage, any abnormal discharge or urine should not be collected.

This treatment is simple –uncomplicated– but, medicine is prepared of high or higher influence –for a patient. So this treatment is expensive. In this treatment, the role of the patient is also very important. Proper result receiving– depends on patient's proper following of the rules.

Except urine, discharge which is informing about sickness, as for instance– profuse saliva, pus, leucorrhea, mucus etc. also used for preparing the medicine. In case of preparation of medicine from urine, another important thing is– in the first part of urine of the morning or dawn, in many cases, there is present prostate exudation or mucus and /or gonorrhoeal discharge, in which one or more of main disease-poisons or toxins are present.

One of the main causes of malnutrition is inability of our anabolic system and lack of digestibility. By use of 'MahaPathy' (–the new system of nanomedicine), digestibility and anabolic ability come to the sound and normal state. In this way, 'MahaPathy' is able to help us to make free from malnutrition and is able to make successful our 'Nutrients for All' program.

In case of nutrition, MahaPathic system of medicine takes an excellent part. MahaPathic medicine has an important role in covering the deficiency or losses of the materials (ingredients) of our body-cells. It incites the essential and nutritious materials of the body-cells which are draining away for any reason. As a result of that, the system of the body takes the initiative to recovery the losses gradually. Also 'MahaPathy' medicine increases essential immunity of our body.

One thing we have to keep in our mind, always same poison or toxin does not produce the same symptoms

in our body and mind. There may be produced various symptoms in our body according to our constitutions (The peculiar nature that which is formed on the base of our hereditarily obtained – make & materials, composition, distortion, ailments, toxins etc. and acquired defect & effects, diseases & toxins.) and the quantity of toxins

There may be produced different symptoms in different bodies except some similar symptoms, because of the presence of different sorts of toxins in different quantities. Everyday various sorts of poison or toxins are entering into our bodies in different quantities and making its inside and outside deformed and diseased gradually. Like a cross-bread people of various natures and appearances, our diseases also have become various sorts of natures.

One thing more, all systems of medicines are not fruitful for all diseases or problems. In some fields Herbal medicines are very effective, whereas in some other cases only allopathic medicines are capable to cure. Therefore if you are fond of any one system of medicine, then there is a chance to become unsuccessful in all cases. Whither the medicines are unable to react, there healing meditation, Yoga and different kind of psycho-spiritual or psychological healing methods can be useful. The best is –getting advice from a vast knowledgeable experienced person, to select first the system of treatment, that which would be right for the current or chronic problem.

An attractive thing is, medicine form– contrary impression of 'S-Existence' (CISE) –after entering in our body and after being changed into 'S-Existence' in the body, –if there is already present anything of opposite property, as there is performed the action of recovery in the way of 'MahaPathy'. On the other side, –if there is already present anything harmful of similar property of the medicine (CISE), in our body, also in that case, the action of recovery is performed. But, if there is present any bodiless 'S-Existence' of similar property instead of anything (matter or element) of similar property, in that case, because of much amount of 'S-Existence', there may be exposed the action of poisoning.

MahaPathic medicine and procedure of taking

In this treatment procedure patient's medicine is only one, –here it is no need to select and change a medicine. Only subtlety of medicine needs to be changed. In this treatment procedure, in very minute dose (amount) medicine is taken –in gradually increasing subtlety. Gradually increasing the subtlety* of medicine (or gradually making the medicine more subtle) by the doctor or manufacturer, –the responsibility is entrusted on the patient.

*The nanoparticle is One hundredth of a billion. Sizes range from one nanometer to one hundred nanometer.

In this treatment procedure –liquid medicine is given in a glass-phial to the patient. Everyday in the morning, patient have to take ten drop of medicine from this phial of liquid medicine. Nothing can be taken or drunk one hour before and after –taking the medicine. It is good to take medicine in empty stomach. Before taking medicine, the mouth –tongue teeth has to be brushed and washed with water only. In necessity, water can be drunk before taking medicine.

In the morning, to brush the teeth with toothpaste or toothpowder –is a general habit of many, but in this treatment, it is prohibited to use any type of peppermint, menthol, camphor food –drink and toothpaste or toothpowder. Besides this, neem (Azadirachta indica) or other twig (used as toothbrush) and tobacco –cannot be used.

Gradually if feeling relieved, as the patient proceeds towards cure– according to that, the medicine has to be taken at the interval of two days, later– at the interval of three days –gradually at one week interval. But if the symptoms of disease increase (aggravate) after taking medicine, if a little or a little more increase, then as mentioned before medicine has to be taken at the interval of two to seven days, depending on intensity of aggravation. But if increases too much, the taking of medicine has to be stopped, while the aggravation of symptoms are present. After aggravation, if relief is seen, then also medicine has to be stopped. In some cases, suppressed disease or disease-symptoms can be reappeared. Also in these cases, medicine has to be stopped, while the symptoms are present.

If skin disease or eruption is seen, after taking of medicine, no ointment should be used on that. If rheumatic pain increases– effort has to be made, to tolerate that. If it is intolerable, temporarily one or two allopathic pain killer tablets can be taken. But no steroid is allowed.

In some cases, after judging the patient’s condition– on amelioration or aggravation of symptoms, taking of medicine is stopped. As long as the amelioration or symptoms of aggravation is present or will continue, till that time, the taking of medicine will be stopped.

Here a thing is worth mentioning, dropper, hand or any other object cannot be inserted into the medicine phial. The lid of the phial has to be replaced immediately after the medicine is taken. The medicine phial has to be kept away from the direct heat or sun.

It is necessary to tell something, regarding the collection of main material of medicine. Besides, in this process– to be mentioned of some rules to be followed, for the collection of main material from patient’s body, for the preparation of medicine. The patient cannot take any medicine, customary empiric medicine, exciting food– drinks, addiction things – any drug or liquor, from fifteen days before, collection of patient’s urine or saliva or any abnormal discharge, etc. for the preparation of medicine. From three days before, to, collection of urine, etc. the patient has to take, only vegetable, boiled rice, handmade bread, milk (pure). It is prohibited to take salt or salty, sweet and bitter things, hot (chilly), sour, exciting food –drink, any drug or tobacco. Too much hard work, irregularity, over strain, awaking night, etc cannot be done. The morning on which patient’s urine will be collected, the previous night; patient must has to be without food.

In case of urine, on the specified date of urine taking– an ounce of urine has to be taken from the first urine of the morning, to be collected in the sterilized – purified bottle, supplied by the MahaPathy treatment center.

During the treatment period, the patient needs to follow some rules. It is prohibited, – taking any exciting food –drinks, any drug or addiction things, coffee, camphor peppermint mixed food or drinks, bitter and astringent food or drinks etc are prohibited. Females need to stop taking medicine during monthly menstruation. For brushing the teeth– toothpaste or toothpowder should not be used. Instead of that, one kind of white powder, supplied by the treatment center, can be used or only water- brush can be done. During the period of treatment unsystematic lifestyle should not be followed. Patient should be free from impure –infectious intercourse.

After feeling the action (aggravation or amelioration) of medicine– it is duty to inform the doctor. Besides this, as per necessary, patient should contact doctor at interval of every fifteen days or one month. If there is much aggravation of the disease, then it should be understood that there has been some irregularity in taking of medicine, or the period of suffering from disease, is going to finish. That means cure or free from disease is approaching. Besides this, suppressed disease– especially rheumatic pain, skin disease etc may expose at many times. In that case, medicine taking should be stopped –contact should be made with the doctor and suggestion should be taken. The direction of getting cured from the disease is generally from inner to outer and top to bottom gradually.

If sufficient recovery or cure has been felt, the taking of medicine has to be stopped, as per the suggestion of the doctor. When medicine taking is stopped, closing the lid of the medicine phial –tightly, it is necessary to preserve that, by the help of the doctor, so that if needed in future, that can be used again, as per the suggestion of doctor.

In many cases, it may be necessary to use more subtle medicine, twice or thrice. In that case, to make more subtle medicine from this medicine, patient has to apply to the medicine manufacturer through the treatment centre. In future, if any disease seen, then if it is not cured by this medicine, in that case, again new medicine may be needed to prepare.

Along with taking this medicine– effort and arrangement to be made to be always happy – cheerful, and along with that, by practice of 'Susupti Yoga' or 'Nidra Yoga' procedures –attainment of universal soundness is possible.

After taking the highly influential– very subtle medicine (– given to the patient), if any action is not felt within one month, then it should be understood– more subtle medicine is necessary for that patient. In that case, more subtle or high influential medicine has to be prepared, as per the suggestion of the doctor.

Besides that, if the prevention and defense system is very weak or very excited and if the power of reaction of the body is lost– for serious sickness and/or taking many types of medicines, besides that in case of abnormal constitution, many times, after taking of medicine –patient may not feel any effect (action or reaction) of the medicine.

By this procedure of treatment, almost every disease can be treated, but its medicine preparation is time consuming and expensive, therefore usually it is noticed to be used, for the treatment of serious and chronic diseases. When any customary (current) procedure of treatment does not help to cure the disease, then the MahaPathy's astonishing efficacious excellence– greatness is felt. And for that reason– this is – MahaPathy.

Why the subtlety of medicine is increased gradually:

If in the body, any poison is present in large or much amount, by this medicine (CISE), that poison cannot be made completely removed or make to disappear. Because, to remove that poison, the defense system of the body– much amount of 'CSE' of that poison has to be prepared from this medicine, which is beyond the capacity of the body. When any poison enters the body in great amount– then the defence system of the body gets into disorder. Then the body cannot do the defence and remedial work systematically. Beside

this, in form of medicine, that poison's CISE (from which –body prepares 'CSE') we get (in procedure of MahaPathic subtilization) less– more, in different subtle form. This subtle bodied 'CSE' is easily capable to remove or disappeared its similar formed subtle bodied contrary matter (poison), which is present in the body, at the (in more or less) old or chronic stage of the disease.

If anyone, after taking in great amount poison –takes the medicine (CISE) prepared from that poison, in that case, all the bodily poison cannot be removed by that medicine. By MahaPathic procedure, we cannot make contrary matter or any material contrary existence. If it is possible (in future) to prepare that, by any other procedure, then this problem –may not be there, then we will be able to remove or disappeared the great amount material poison, in the body.

Definitely in the case of old or chronic disease, also in case of new disease– the poison of the disease, is present in our body, in (–different level or degree) subtle bodied form. Generally, when the symptoms of disease are seen on body – mind, a little or long before that, the cells of the body have been started to be attacked. Till the cells are not attacked in some more amounts, we cannot feel any specific problem. Even if we feel a little, we do not care so much.

Between any poison and body cell, during action – reaction taking place –along with the passage of time, the bodily poison, gradually attains subtlety. Through this action –reaction, in the poison and body cells– in both, more or less, changes take place.

It may not be that, the poison of the whole body, having equal subtlety. According to obtained (inner) environment –situation –happening, each poison particle may have separate states.

Any subtle bodied (the form of CISE) medicine –of any specific degree or potency –is able to remove or disappear the poison –properly, which is similar subtle –contrary-existence of that medicine. Also it is able to remove partly or sometimes wholly its nearest subtle bodied poison. But if there is great difference in the level or degree of subtlety, many times, both are unable to remove each other. For this reason, to remove or disappeared –the different formed subtle bodied poison; it is to take help of the similar subtle or gradual more subtle medicine-form 'CISE' – contrary impression of 'S-Existence' of that poison.

In case of matter, the limit of subtleness is not extended to very far. But the limit of subtlety of 'CISE' is extended to a long distance. Though, all things have the end. The limit of subtlety of material

poisons are not extended to a very long distance. However old, it is in the body.

But, when a poison gets lost its individual form, bringing about deformity of body cells–, and after that, when that deformed cells do abnormal behavior like action of poisoning, continuously for a long time, as a result of that, one time, the nature– character etc of those sick cells– is included as a code –in the gene of the body. Then truly, that poison-existence is obtained a too subtle state.

In this case, not from the poison, –using the medicine (CISE) of extremely subtle form , prepared from that deformed sick cells, –it become possible to be free from serious disease in many respects or some time in all respects.

Why minute dose of the medicine is used:

As the total amount of medicine-particle has the grossness and minuteness, similarly, every particle of the medicine has the bodily corpulence and subtlety. From this bodily corpulence to gradual subtlety, different stages are expressed in different gradually higher subtle form. And, in amount, from grossness to different stages of gradual minuteness –these are gradually expressed in the form of gradual minute amount (dose).

If more quantity or amount of medicine (CISE) enters into the body, usually the body as per its capability – accepts very little part, and does the processing. But at various times, based on different physical conditions, different incidents may take place. Sometimes the body may refuse to accept in any part, and to do the processing of much quantity of medicine (as CISE). Again, sometimes may be, accepting and processing in much quantity– may call for its own danger.

If the amount of ‘CSE’ is created more, than amount of poison, present in the body, –disturbance – indiscipline –harm may take place– inside the body. Extra ‘CSE’ or contrary S-Existence can lead to the causing of action of poisoning by oneself. In the body, in minute amount– if increasing subtle medicine (CISE) enters, there is not to be afraid of so much of harm. And for any reason if harm is seen, stopping the medicine– easily that can be controlled.

Conclusion:

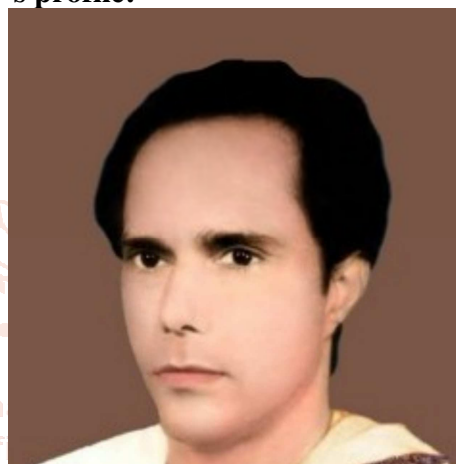
The nanoparticle medicine or nanomedicine that is now in vogue, if the nanomedicine is prepared in a special process, by repeated mixing and friction then it becomes superior to ordinary nanomedicine. This method will create S-existence and it's contrary existence. If nanomedicine is made in this way from diseased cells or toxins in the body, the nanomedicine

reaches the body and combines with the toxin or diseased cell, destroying both. In this way we can benefit through the practical application of S-existence. I am hopeful that the successful use of this S-existence in the future will enable people to benefit in many more ways.

References:

- [1] The scientific thoughts... https://www.amazon.com/gp/aw/d/9354380417/ref=tmm_pap_swatch_0?ie=UTF8&qid=&sr=
- [2] MahaPathy: A new invented system of medical treatment. <https://www.kobo.com/us/en/ebook/mahapathy>

Author's profile:



Sumeru Ray alias Maharshi MahaManas

Maharshi MahaManas being sympathetic to the suffering of the helpless troubled human he has worked tirelessly all his life to alleviate their misery and poverty.

He understood from his deep thinking and experience that the root cause of most of the problems and mishaps caused by human beings is lack of adequate knowledge and consciousness and illness of body and mind. Most problems will be solved if the human mind develops enough. That is why he has created an excellent and incomparable mind-development education system, its name is 'MahaManan' education.

If we can implement his multifaceted revolutionary work and thought, then there will surely be a radical change in human life. All that is needed for this is a strong team dedicated to the cause of real human development in the path shown by him.

He did not look at all our problems from above or from the surface. He has found the root cause of the problem and discovered the way to its real solution.

He is truly a free-spirited science-minded man. He did not try to find solution by flying in the sky with the wings of imagination. His every thought has

moved forward along the path of reasoning~ judgment and reality.

It would not be an exaggeration to call him the great sage of the modern times who sees the truth. He has made many scientific discoveries in his search for the truth of life and cosmic life.

It was not at all happy for him to continue his exploration for truth. He did not think of his own happiness and prosperity, but he had to endure a lot of hardships and obstacles for the welfare of human beings and went ahead tirelessly in search of the way of real liberation of the human beings. This is how the great doctrine of this time~ 'MahaVad' (Mahaism) was born.

Maharshi MahaManas is a free-minded rational sage of this millennium, master of reasonable spirituality, a

multi-talented creator, researcher, writer, philosopher, awakener, educator, multifaceted free thinker and he is self-dedicated to real human improvement.

He is the creator of the great doctrine of the time 'MahaVad' (Mahaism) and the founder of an epoch-making new religion called 'MahaDharma' for real human development including true mind development.

He has extensive knowledge in fine arts, literature, meditation, yoga, healing arts, self-development programs, lyric, story and screenwriting, music composition and filmmaking, newspaper and magazine editing. If you are interested to know more about him, you should read his books. It will also be possible to know a lot about him by searching the internet.

