

AI-Integrated Server Architectures for Precision Health Systems: A Review of Scalable Infrastructure for Genomics and Clinical Data

Ravichandra Mulpuri

Salesforce Consultant, Centers for Medicare & Medicaid Services (CMS)

ABSTRACT

The increasing complexity and scale of healthcare data, especially genomics and clinical datasets, necessitate robust server infrastructures capable of supporting AI-driven analytics. Precision health systems depend on real-time processing, secure data management, and scalable computing environments to integrate AI workloads with genomics and clinical information. This review explores AI-integrated server architectures with an emphasis on merging server automation, Red Hat Enterprise Linux (RHEL) environments, and AI workloads in healthcare IT. It discusses the convergence of scalable server automation, operating system optimization, and AI acceleration technologies that collectively form the backbone of modern precision health infrastructures. The paper evaluates current technological trends, the practical role of server automation, challenges in large-scale data handling, and future directions in building resilient, high-performance computing platforms to support genomics, AI-driven diagnostics, and clinical decision-making.

KEYWORDS: Precision Health, AI Workloads, Server Automation, Genomics, Clinical Data, RHEL, Healthcare IT, Scalable Infrastructure, Data Integration, High-Performance Computing, Automation, AI in Healthcare

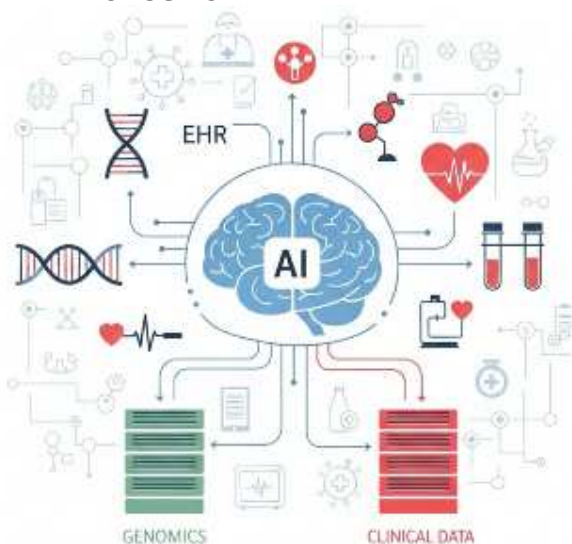
How to cite this paper: Ravichandra Mulpuri "AI-Integrated Server Architectures for Precision Health Systems: A Review of Scalable Infrastructure for Genomics and Clinical Data" Published in International Journal of Trend in Scientific Research and Development (ijtsrd), ISSN: 2456-6470, Volume-4 | Issue-6, October 2020, pp.1984-1989, URL: www.ijtsrd.com/papers/ijtsrd33615.pdf



Copyright © 2020 by author(s) and International Journal of Trend in Scientific Research and Development Journal. This is an Open Access article distributed under the terms of the Creative Commons Attribution License (CC BY 4.0) (<http://creativecommons.org/licenses/by/4.0>)



1. INTRODUCTION



AI-Integrated Server connected to server racks, DNA strands, and medical data symbols

The healthcare sector is undergoing a monumental technological transformation driven by advances in artificial intelligence (AI), machine learning (ML), and big data analytics. At the forefront of this transformation is the growing need to process, analyze, and securely manage vast, complex, and heterogeneous datasets derived from clinical workflows, electronic health records (EHRs), medical imaging, and, notably, high-throughput genomic sequencing (Belle et al., 2015). These datasets, when effectively integrated and analysed, form the foundation of precision health systems — a paradigm shift in healthcare that emphasizes predictive, preventive, personalized, and participatory medical care tailored to the unique genetic, environmental, and clinical characteristics of individual patients (Johnson et al., 2020). The rise of precision health has significantly increased the computational, storage, and data management requirements across healthcare institutions, research

facilities, and biopharmaceutical organizations. Modern healthcare generates petabytes of data annually, and this volume continues to expand exponentially with the proliferation of genomic studies, wearable health devices, real-time patient monitoring, and AI-driven diagnostic platforms. As a result, existing IT infrastructures, often built upon legacy systems and fragmented architectures, are struggling to cope with the demands of real-time data processing, high-throughput analysis, data interoperability, stringent security requirements, and regulatory compliance (Zheng et al., 2019).

Traditional healthcare IT infrastructures were not designed to handle the scale, speed, and complexity associated with AI-driven precision health initiatives. They often lack the computational horsepower, system flexibility, and automation capabilities needed to efficiently manage large-scale, heterogeneous data pipelines. Moreover, challenges such as data silos, inefficient resource utilization, high operational costs, and vulnerability to cyber threats further hinder the ability of healthcare providers to leverage emerging technologies effectively (Dash et al., 2019). To address these growing challenges, healthcare organizations are increasingly turning toward AI-integrated server architectures, which represent a convergence of advanced computing hardware, intelligent automation technologies, and robust, scalable operating systems. At the heart of these modern infrastructures lies the seamless integration of server automation frameworks, Red Hat Enterprise Linux (RHEL) environments, and AI/ML workloads. This convergence not only enhances system scalability and computational efficiency but also ensures the security, reliability, and regulatory compliance necessary for healthcare operations (Cresswell & Sheikh, 2016).

Server automation plays a pivotal role in reducing manual interventions, streamlining system configuration, enhancing resource provisioning, and enabling dynamic workload management — all of which are critical for supporting the fluctuating computational demands of precision health applications (Almiyad & Alhasan, 2020). Meanwhile, RHEL has emerged as a preferred operating environment due to its enterprise-grade stability, security features, scalability, and strong ecosystem support (Juve et al., 2009). Its compatibility with containerization platforms, virtualization technologies, and hybrid cloud infrastructures further reinforces its suitability for healthcare deployments. AI workloads, encompassing deep learning models, natural language processing (NLP), and predictive analytics, require high-performance computing environments capable of managing intensive processing tasks with minimal latency (Yu et al., 2018). The integration of AI into server architectures accelerates clinical decision support, improves diagnostic accuracy, facilitates

large-scale genomic analyses, and enhances overall healthcare delivery efficiency.

This review provides a comprehensive exploration of AI-integrated server architectures tailored to precision health systems. It examines the synergistic role of server automation, RHEL environments, and AI convergence in building scalable, secure, and efficient infrastructures for genomics and clinical data processing. Additionally, it highlights how these technologies are reshaping healthcare IT landscapes, overcoming existing limitations, and driving the realization of truly personalized, data-driven healthcare ecosystems.

2. AI-Integrated Server Architectures in Healthcare IT

The integration of artificial intelligence (AI) into healthcare is revolutionizing how medical services are delivered, offering advanced capabilities in disease prediction, precision medicine, genomics interpretation, medical imaging analysis, and continuous patient monitoring. These AI-driven applications depend on robust and scalable server architectures capable of handling high computational demands, managing vast volumes of data, and supporting complex, time-sensitive workflows (Yu et al., 2018). Traditional healthcare IT infrastructures, characterized by static, siloed systems and manual configurations, are increasingly proving inadequate for supporting the dynamic requirements of modern AI workloads. To meet these evolving demands, healthcare institutions are adopting AI-integrated server architectures that combine cutting-edge hardware with intelligent, software-defined infrastructure. These architectures incorporate high-performance computing components such as central processing units (CPUs), graphical processing units (GPUs), field-programmable gate arrays (FPGAs), and dedicated AI accelerators. Together, these elements provide the computational power necessary for tasks like deep learning model training, real-time diagnostics, and genomic data analysis (Spina, 2018).

However, the transformation extends beyond hardware. Server automation, virtualization, and orchestration tools are essential for dynamically allocating resources based on fluctuating workload requirements. For example, genomics workflows involve multi-stage pipelines, including data ingestion, quality control, sequence alignment, variant detection, and interpretation, all of which demand scalable, resilient, and automated server environments to ensure efficiency and accuracy (Tanjo et al., 2020). Furthermore, AI-integrated server architectures must prioritize data privacy, system interoperability, and real-time analytics to comply with healthcare regulations and support clinical decision-making. The integration of high-throughput storage, advanced networking, and containerized environments further

enhances the reliability, flexibility, and scalability of AI applications within healthcare IT ecosystems (Yu et al., 2018).

3. Merging RHEL with AI Workloads in Healthcare Infrastructure

Red Hat Enterprise Linux (RHEL) has become a foundational component in building enterprise-grade, secure, and scalable computing environments. Its widespread adoption across healthcare IT stems from its stability, security, and broad compatibility with AI tools, container platforms, and data processing pipelines (Jamshidi et al., 2013). RHEL's support for AI frameworks such as TensorFlow, PyTorch, Keras, and ONNX allows healthcare organizations to integrate AI models into clinical workflows seamlessly. Furthermore, RHEL's native compatibility with Kubernetes, OpenShift, and other container orchestration technologies facilitates the deployment of modular, scalable AI services across both on-premises and cloud environments (Yu et al., 2018). This flexibility is vital for healthcare providers seeking hybrid IT strategies that balance data sovereignty, performance, and cost-effectiveness.

Security is another critical advantage of RHEL in healthcare. With features such as SELinux, role-based access control (RBAC), and certified compliance with healthcare data protection standards, RHEL ensures that sensitive genomics and clinical data remain secure throughout AI processing pipelines. The convergence of RHEL with AI workloads provides a robust foundation for healthcare organizations to innovate while maintaining regulatory compliance (Datta et al., 2020).

4. Server Automation: Enabling Scalability, Efficiency, and Reliability

Server automation serves as a cornerstone for building scalable, efficient, and reliable AI-integrated healthcare infrastructures. As healthcare organizations increasingly adopt AI-driven solutions for precision medicine, genomics, and clinical decision support, the complexity of managing these advanced IT environments has grown substantially (McGrow, 2019). Manual server management, once feasible for smaller-scale operations, is now a significant bottleneck that introduces operational inefficiencies, inconsistencies, and human error—particularly in environments processing massive datasets or running time-sensitive AI applications. In precision health systems, where genomic datasets often reach petabyte scale, server automation is indispensable for maintaining performance, ensuring system reliability, and accelerating data processing pipelines (Demchenko et al., 2016). Automation tools significantly reduce operational complexity by enabling rapid, standardized provisioning of computing

resources based on dynamic workload demands. Infrastructure-as-Code (IaC) frameworks, such as Ansible, Terraform, and Puppet, allow healthcare IT teams to define, deploy, and manage server configurations through code rather than manual processes. This approach ensures consistency across the IT environment, simplifies system updates, enables automatic security patching, and supports robust system health monitoring — all while minimizing human intervention (Morris, 2016).

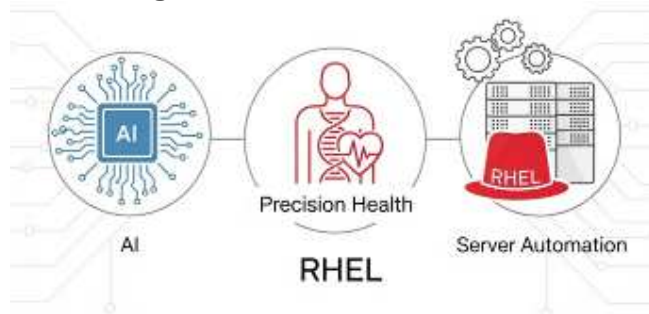
Automation also plays a vital role in supporting scalability and high availability, both essential for uninterrupted AI service delivery. By dynamically scaling server resources based on real-time demand, healthcare systems can efficiently handle peaks in computational workloads, such as those encountered during genomic sequencing runs or AI-based diagnostics. Beyond infrastructure, automation extends to AI and data pipelines (Gopal et al., 2018). For example, automated workflows for genomics facilitate seamless progression through stages such as raw data ingestion, quality control, sequence alignment, variant calling, annotation, and final reporting. In AI-driven healthcare environments, automation ensures continuous integration and deployment (CI/CD) of updated models, providing healthcare professionals with access to the latest, most accurate algorithmic insights, ultimately improving patient care and operational efficiency (Yu et al., 2018).

5. Integrating AI Workloads with Genomics and Clinical Data Pipelines

The integration of AI workloads with genomics and clinical data pipelines presents both opportunities and challenges. AI models must interface with disparate data sources, including electronic health records (EHRs), laboratory systems, imaging platforms, and genomic databases (Ehwerhemuepha et al., 2020). Achieving this integration requires server architectures optimized for data interoperability, high-throughput storage, and real-time analytics. Healthcare organizations increasingly rely on parallel file systems, NVMe storage, and high-speed interconnects to facilitate rapid data transfer and processing. The adoption of standardized data formats, APIs, and interoperability protocols ensures that AI models can consume and analyze data from diverse sources without manual intervention (Xiao et al., 2020).

Containerized microservices and AI workloads deployed on RHEL-based infrastructures provide modular, scalable solutions for integrating AI into clinical workflows. These architectures allow healthcare providers to incrementally introduce AI capabilities without overhauling existing IT environments, accelerating adoption and reducing risk (Mollura et al., 2020).

6. The Role of AI, Server Automation, and RHEL in Enabling Precision Health



An illustration showing three interconnected elements

The realization of precision health depends on the seamless convergence of advanced technologies capable of transforming vast, complex healthcare datasets into actionable, personalized medical insights. Precision health aims to move beyond generalized treatment approaches by leveraging genomic information, clinical data, lifestyle factors, and real-time monitoring to provide highly individualized care. Achieving this level of personalized healthcare requires robust IT infrastructures where artificial intelligence (AI), server automation, and reliable operating environments like Red Hat Enterprise Linux (RHEL) work in harmony (Gopal et al., 2018). AI is at the forefront of this transformation, offering unprecedented capabilities for processing and analyzing complex, multi-modal healthcare data. Machine learning models and deep learning algorithms are increasingly used to detect disease risk factors, predict patient outcomes, interpret genomic sequences, and uncover hidden patterns within large datasets. However, the effectiveness of AI in precision health is directly tied to the underlying server infrastructure's ability to provide scalability, computational efficiency, and data security (Lehne et al., 2019).

Server automation plays a crucial role in simplifying the management of these complex environments. By employing tools like Ansible, Terraform, and Puppet, healthcare organizations can automate routine server tasks, ensure consistent configurations, and dynamically scale resources in response to fluctuating computational demands. This allows IT teams to focus on innovation, application development, and improving AI pipelines rather than being consumed by manual maintenance (Almiyad & Alhasan, 2020). Equally important is the integration of RHEL, an enterprise-grade Linux platform known for its stability, security, and compatibility with AI development tools. RHEL provides a reliable foundation for deploying AI workloads in healthcare settings, offering features like enhanced security modules, container orchestration, and optimized performance for both on-premises and cloud environments (Mollura et al., 2020).

The convergence of AI, server automation, and RHEL creates an integrated, scalable infrastructure that

addresses the core challenges of precision health. These include efficiently processing petabyte-scale genomic datasets, delivering real-time analytics to support clinical decision-making, ensuring secure handling of sensitive health information, enabling rapid deployment of AI models into production, and providing the scalability required to accommodate growing data volumes and evolving healthcare needs. This integrated approach is essential for translating cutting-edge research into practical, personalized healthcare solutions, ultimately enhancing patient outcomes and driving the future of data-driven medicine (Dash et al., 2019).

7. Discussion: Opportunities, Challenges, and Future Directions

The merging of server automation, RHEL, and AI workloads represents a paradigm shift in healthcare IT. By combining these technologies, healthcare organizations can build infrastructure capable of handling vast, complex data streams to improve diagnostics, enable precision medicine, and enhance patient outcomes. Yet, several significant challenges must be addressed to fully realize the potential of AI-integrated server architectures. First, the variability of data formats and sources across healthcare institutions complicates seamless data integration. The healthcare industry requires the widespread adoption of interoperability standards to facilitate consistent, reliable AI-driven data analysis. Secondly, as the volume of genomics and clinical data continues to expand exponentially, server architectures must evolve to support higher processing throughput, larger storage capacities, and greater computational efficiency. Security and compliance are also pressing concerns—stringent regulations demand robust security frameworks to protect sensitive health data and ensure patient privacy. AI model validation presents another layer of complexity, as it is vital to ensure models perform accurately, reliably, and fairly across diverse patient populations. Lastly, achieving optimal resource utilization requires intelligent server management to balance performance, energy consumption, and operational costs. Looking ahead, emerging technologies like edge computing, federated learning, and AI model optimization will reshape healthcare IT. Edge AI allows data processing closer to the source, reducing latency and improving real-time decision-making capabilities in clinical settings. Federated learning supports collaborative AI model training across decentralized datasets, preserving patient privacy—an increasingly critical consideration. Furthermore, continuous innovations in server automation, container orchestration, and AI frameworks will enhance the scalability and resilience of healthcare IT infrastructures. Future research should prioritize optimizing server architectures for distributed AI workloads, improving data interoperability, and establishing standardized frameworks for AI deployment, monitoring, and

validation to ensure safe, effective integration into healthcare environments.

8. Conclusion

The integration of AI workloads with genomics and clinical data is transforming healthcare delivery, enabling more personalized, predictive, and data-driven care. Realizing this vision requires server architectures that merge automation, RHEL environments, and AI technologies to create scalable, secure, and efficient infrastructures. Server automation streamlines resource management, improves operational efficiency, and enables dynamic scaling to meet fluctuating healthcare workloads. RHEL provides a robust, secure platform for AI development and deployment, ensuring compatibility with industry-leading tools and compliance with healthcare data protection standards. AI workloads deliver critical insights that enhance diagnostics, treatment planning, and patient monitoring.

By converging these technologies, healthcare organizations can build resilient, high-performance computing environments capable of supporting precision health at scale. While challenges remain in data standardization, security, and scalability, ongoing innovation in AI-integrated server architectures will be key to addressing these barriers and unlocking the full potential of AI in healthcare. Ultimately, the successful merging of server automation, RHEL, and AI workloads will enable healthcare systems to process vast data streams efficiently, deploy cutting-edge AI capabilities, and deliver personalized care that improves patient outcomes on a global scale.

References

- [1] Almiyad, M., & Alhasan, A. (2020). An Automation Engine to Improve Seismic Operations in Exploration. International Petroleum Technology Conference. <https://doi.org/10.2523/19960-ms>
- [2] Belle, A., Raghuram, T., Soroushmehr, S. M. R., Navidi, F., Beard, D., & Najarian, K. (2015). Big Data Analytics in Healthcare [Review of Big Data Analytics in Healthcare]. BioMed Research International, 2015, 1. Hindawi Publishing Corporation. <https://doi.org/10.1155/2015/370194>
- [3] Cresswell, K., & Sheikh, A. (2016). Key global developments in health information technology. Journal of the Royal Society of Medicine, 109(8), 299. <https://doi.org/10.1177/0141076816656484>
- [4] Dash, S., Shakyawar, S. K., Sharma, L., & Kaushik, S. (2019). Big data in healthcare: management, analysis and future prospects. Journal Of Big Data, 6(1). <https://doi.org/10.1186/s40537-019-0217-0>
- [5] Datta, S., Posada, J., Olson, G., Li, W., O'Reilly, C., Balraj, D., Mesterhazy, J., Pallas, J., Desai, P., & Shah, N. H. (2020). A new paradigm for accelerating clinical data science at Stanford Medicine. arXiv (Cornell University). <https://doi.org/10.48550/arXiv.2003.10534>
- [6] Demchenko, Y., Grosso, P., Laat, C. de, Filiposka, S., & Vos, M. de. (2016). ZeroTouch Provisioning (ZTP) Model and Infrastructure Components for Multi-provider Cloud Services Provisioning. arXiv (Cornell University). <https://doi.org/10.48550/arXiv.1611.02758>
- [7] Ehwerhemuepha, L., Gasperino, G., Bischoff, N., Taraman, S., Chang, A., & Feaster, W. (2020). HealthDataLab – a cloud computing solution for data science and advanced analytics in healthcare with application to predicting multi-center pediatric readmissions. BMC Medical Informatics and Decision Making, 20(1). <https://doi.org/10.1186/s12911-020-01153-7>
- [8] Gopal, G., Suter-Crazzolara, C., Toldo, L., & Eberhardt, W. (2018). Digital transformation in healthcare – architectures of present and future information technologies. Clinical Chemistry and Laboratory Medicine (CCLM), 57(3), 328. <https://doi.org/10.1515/cclm-2018-0658>
- [9] Jamshidi, P., Ahmad, A., & Pahl, C. (2013). Cloud Migration Research: A Systematic Review [Review of Cloud Migration Research: A Systematic Review]. IEEE Transactions on Cloud Computing, 1(2), 142. Institute of Electrical and Electronics Engineers. <https://doi.org/10.1109/tcc.2013.10>
- [10] Johnson, K. B., Wei, W., Weeraratne, D., Frisse, M. E., Misulis, K. E., Rhee, K., Zhao, J., & Snowdon, J. (2020). Precision Medicine, AI, and the Future of Personalized Health Care [Review of Precision Medicine, AI, and the Future of Personalized Health Care]. Clinical and Translational Science, 14(1), 86. Wiley. <https://doi.org/10.1111/cts.12884>
- [11] Juve, G., Deelman, E., Vahi, K., Mehta, G., Berriman, G. B., Berman, B. P., & Maechling, P. J. (2009). Scientific workflow applications on Amazon EC2. 59. <https://doi.org/10.1109/esciw.2009.5408002>
- [12] Lehne, M., Saß, J., Essenwanger, A., Schepers, J., & Thun, S. (2019). Why digital medicine depends on interoperability [Review of Why digital medicine depends on interoperability]. Npj Digital Medicine, 2(1). Nature Portfolio. <https://doi.org/10.1038/s41746-019-0158-1>
- [13] McGrow, K. (2019). Artificial intelligence [Review of Artificial intelligence]. Nursing, 49(9), 46. Lippincott Williams & Wilkins.

- <https://doi.org/10.1097/01.nurse.0000577716.57052.8d>
- [14] Mollura, D. J., Culp, M. P., Pollack, E., Battino, G., Scheel, J. R., Mango, V. L., Elahi, A., Schweitzer, A., & Dako, F. (2020). Artificial Intelligence in Low- and Middle-Income Countries: Innovating Global Health Radiology [Review of Artificial Intelligence in Low- and Middle-Income Countries: Innovating Global Health Radiology]. *Radiology*, 297(3), 513. Radiological Society of North America. <https://doi.org/10.1148/radiol.2020201434>
- [15] Morris, K. (2016). Infrastructure as Code: Managing Servers in the Cloud. <https://www.amazon.com/Infrastructure-Code-Managing-Servers-Cloud/dp/1491924357>
- [16] Spina, R. (2018). Big Data and Artificial Intelligence Analytics in Geosciences: Promises and Potential. *GSA Today*, 29(1), 42. <https://doi.org/10.1130/gsatg372gw.1>
- [17] Tanjo, T., Kawai, Y., Tokunaga, K., Ogasawara, O., & Nagasaki, M. (2020). Practical guide for managing large-scale human genome data in research [Review of Practical guide for managing large-scale human genome data in research]. *Journal of Human Genetics*, 66(1), 39. Springer Nature. <https://doi.org/10.1038/s10038-020-00862-1>
- [18] Xiao, Y., Shi, G., Li, Y., Saad, W., & Poor, H. V. (2020). Toward Self-Learning Edge Intelligence in 6G. *IEEE Communications Magazine*, 58(12), 34. <https://doi.org/10.1109/mcom.001.2000388>
- [19] Yu, K., Beam, A. L., & Kohane, I. S. (2018). Artificial intelligence in healthcare [Review of Artificial intelligence in healthcare]. *Nature Biomedical Engineering*, 2(10), 719. Nature Portfolio. <https://doi.org/10.1038/s41551-018-0305-z>
- [20] Zheng, T., Chen, G., Wang, X., Chen, C., Wang, X., & Luo, S. (2019). Real-time intelligent big data processing: technology, platform, and applications. *Science China Information Sciences*, 62(8). <https://doi.org/10.1007/s11432-018-9834-8>

