

Mathematical Model of Ego Function in Spouses

Dr. A. K Yadav¹, Dr. Rashmi Chaudhary², Dr. Sushil Kumar³

¹Department Mathematics, Govt. P.G. College, Datia, Madhya Pradesh, India

²Department Geography, Govt. K.R.G. P.G. College, Gwalior, Madhya Pradesh, India

³Department Mathematics, C.C.S.P.G. College, Heonra, Etawah, Uttar Pradesh, India

ABSTRACT

Presented herein are the studies of ego function in spouses. This model taken in account of special characteristic of ego function problem. It has been observed that increases of ego function create domestic violence. It is also observed that increases of ego function increases different types of decreases such as b. p etc. It has been observed that ego problem disturb the relationship of the family in societies.

KEYWORDS: *Ego function, spouses, behavior, satisfaction, friendship, relationship, emotion, impact, significant, society*

How to cite this paper: Dr. A. K Yadav | Dr. Rashmi Chaudhary | Dr. Sushil Kumar "Mathematical Model of Ego Function in Spouses" Published in International Journal of Trend in Scientific Research and Development (ijtsrd), ISSN: 2456-6470, Volume-4 | Issue-4, June 2020, pp.697-699, URL: www.ijtsrd.com/papers/ijtsrd31189.pdf



IJTSRD31189

Copyright © 2020 by author(s) and International Journal of Trend in Scientific Research and Development Journal. This is an Open Access article distributed under the terms of the Creative Commons Attribution License (CC BY 4.0) (<http://creativecommons.org/licenses/by/4.0>)



INTRODUCTION

The behavior in developing the individuals is well documented common interest. The satisfaction has been considered as main factor of friendship. In Indian culture mutual attraction is most important factor. Friendship sharing specific interest^{3,4}. The similarity between Indian couples during period of dating and early days positive. The partnership quality between couple in romantic intimacy and in relationship satisfaction⁶. The effect of parental ego function on adolescent focusing on longtime. The formation of education family well being adjustment social relation. The effect of parental ego on young adults to form maintains good relationships. The children from ego function families have more emotional problems compared to other children.

In majority in India marriage considered a sacrament. In a sanctuary marriage is regarded as a childrearing. In Indian families modernization have brought changes. The structure of increasing number of families are nuclear type. From their home towns mobility and migration have effected the families' living standard. Couples living in cities area are exposed more economic relationship of unsatisfactory^{2,8}.

India is a segmented in to various cultural zones. There are much differences in the nature and practice of marriage. Due to social, culture and economic changes migration. The significant impact on marriage has gender roles in relationship. Women have a new view of their role in society.

Though partner selection may be based on mutual understanding. Mental tuning some issues of their satisfaction. A common sharing between couple cannot be satisfactory conjugal life. The impact of dissimilarity between two persons has the potency to minimize graceful relationship. Couples relationship after marriage may act as a buffer against mental health problem and unhappiness. Goldstein⁵said that the ego psychology in much factor of the individual's worth, self decision, and non judgment attitude. Kurdek⁷ said that spouses with difference in attitudes values of belief may experience marital problems. Positive frame of reference is positively satisfaction relationship marital life between two spouses. But the own ego of females' disparity their male partners. The ego function between the females and their male partner relationship create different quality in life. The component of ego function of both appraises its relationship quality of material life. The female who suffered from psychological ego factor there are many problem in her family.

Marital quality induces adjustment as well as happiness and satisfaction. Saha⁹ said that twelve factor of marital quality as understanding, satisfaction, affection, despair decision making, rejection, dissolution potential, dominance, self-disclosure, role functioning and trust. Saha⁹ said that ego functions are stable variable concerned with two persons. This is related to ego strength of the

couple. Yadav A.K, Kumar S. & Chaudhary R.¹⁰ said that domestic violence depends upon physical relationship.

The purpose of this paper is to develop a mathematical model to know about the ego function effect on family atmosphere.

Formulation of the problem

This model is of relevance studies in particularly in the real world.

The bearing model considered the present analysis of ego function of effect on family.

Let x(t) and y(t) denote the female and male.

If both egos are the normal then the differential equation can be written as

$$\frac{dx}{dt} = S_1x - K_1xy \tag{1}$$

$$\frac{dy}{dt} = S_2y - K_2xy \tag{2}$$

In the absence of male the equation (1) can be written as,

$$\frac{dx}{dt} = S_1x \tag{3}$$

Result and discussion

Present paper proposes a realistic model for explaining ego function of couple. The result of ego function member have been examined for different values of parameter.

It is clear that ego function growth of first person does not depend on second person. Similarly ego function growth second person does not depend on first person. It is clear that ego function create domestic violence and negativity of home atmosphere. It has been observed that increases of ego function decreases the physical relationship and decrease trust of life both partner. It also observed that increases of ego function increases different type of decrease (as b.p etc.) both partner. It is also clear that ego problem disturb the relationship of family in societies.

Similarly in the absence of female the equations can be written as

$$\frac{dy}{dt} = S_2y \tag{4}$$

With boundary condition;

$$\begin{matrix} x = x_0 \text{ at } t = 0 \\ y = y_0 \text{ at } t = 0 \end{matrix} \tag{5}$$

Solution of the problem

On separation of variable in equation (3), we get;

$$\frac{dx}{x} = S_1dt \tag{6}$$

Again on separation of variable in equation (4), we get;

$$\frac{dy}{y} = S_2dt \tag{7}$$

Integrating equation (6) , (7) and using the boundary condition (5), we get;

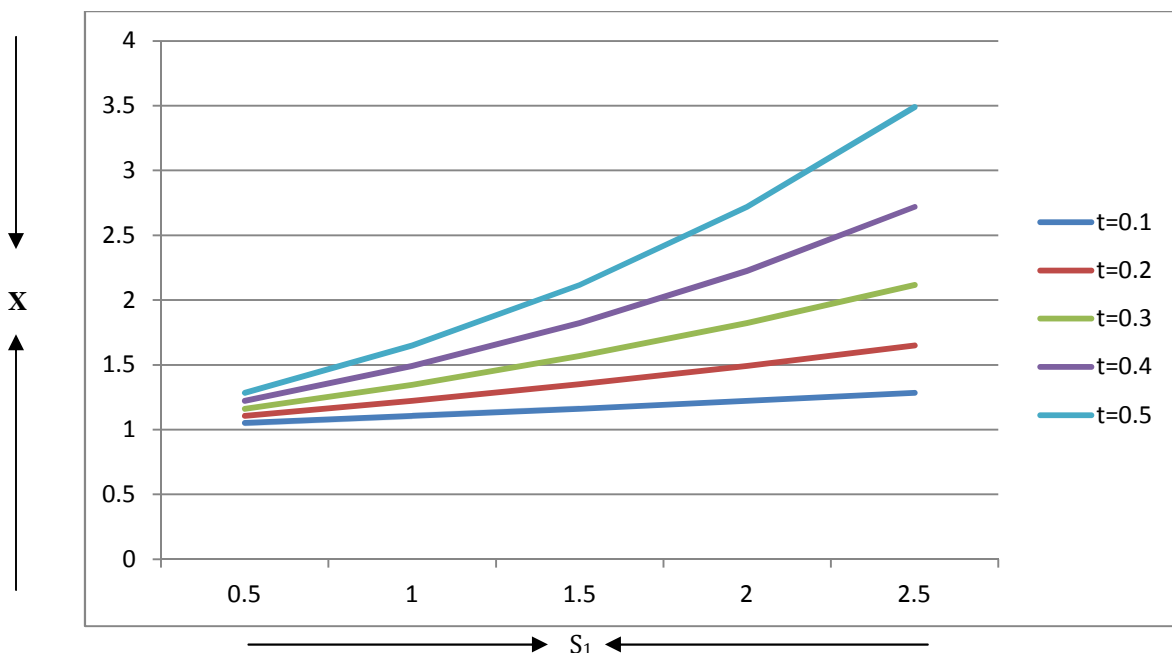
$$x = x_0e^{S_1t} \tag{8}$$

And

$$y = y_0e^{S_2t} \tag{9}$$

Table of ego function at X₀=1, S₀=1

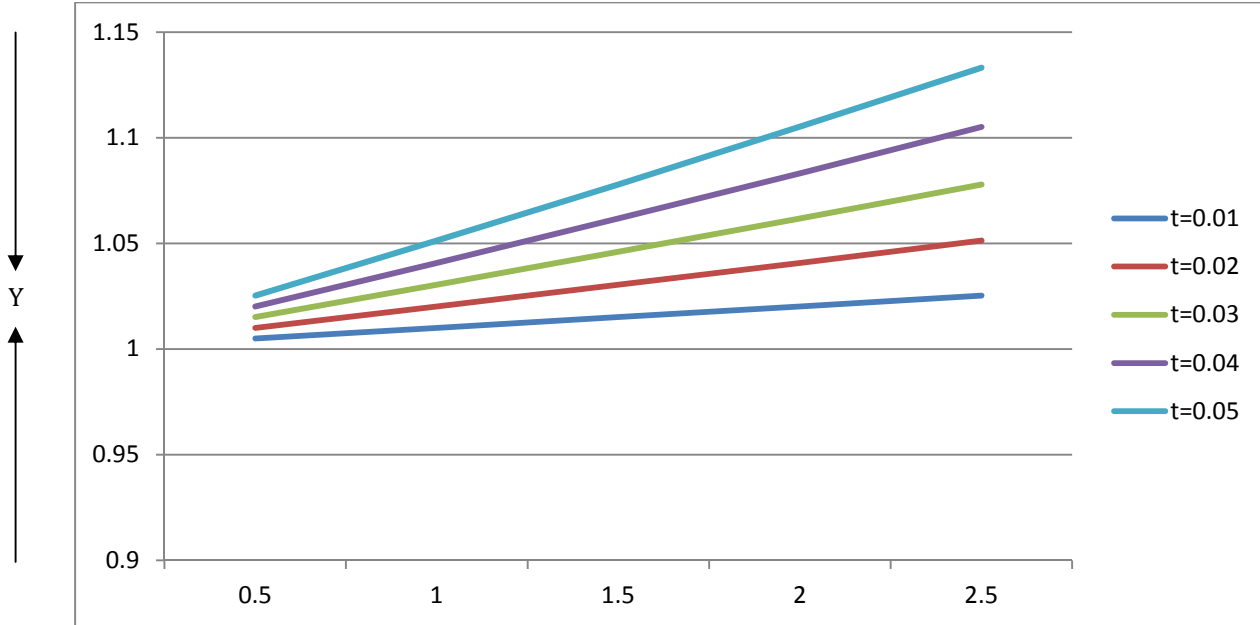
S ₁ \ t	0.1	0.2	0.3	0.4	0.5
0.5	1.0513	1.1052	1.1618	1.2214	1.2840
1.0	1.1052	1.2214	1.3450	1.4918	1.6487
1.5	1.1618	1.3499	1.5683	1.8221	2.1170
2.0	1.2214	1.4918	1.8221	2.2255	2.7183
2.5	1.2840	1.6487	2.1170	2.7183	3.4903



Variation of ego function of male for different values of S_1 & t

Table of ego function at $Y_0=1, S_0=1$

$S_2 \backslash t$	0.01	0.02	0.03	0.04	0.05
0.5	1.0050	1.0100	1.0151	1.0202	1.0253
1.0	1.0100	1.0202	1.0304	1.0408	1.0513
1.5	1.0151	1.0305	1.0460	1.0618	1.0779
2.0	1.0202	1.0408	1.0618	1.0832	1.1052
2.5	1.0253	1.0513	1.0779	1.1051	1.1331



Variation of ego function of female for different values of S_2 & t

Reference

[1] Abraham F. M (2006): Contemporary sociology; an introduction to concepts and theories New Delhi oxford university press.

[2] Arilackal R & George T. S (2014): Psychological components for marital distress and divorc in newly weed Indian couples Jr of divorce and Remarriage 56, p 1-24

[3] Baxter L. A & West L.(2003): Couple perceptions of their similarties and differences. A dialectical perspective Jr. of social and personal relationship 20, p 491-514.

[4] Clore G. L & Byrine .D (1974): A reinforcement affect model of attraction. Indian. T.L. Huston (Ed) foundation of either present attraction p(143-173) New York : Academic Press.

[5] Goldetion E. G (1995): Ego psychology and social work practice second addition) fee press New York.

[6] Gonzega G. C, Compos. B. & Bradbury T. (2007): Similarity convergence and relationship satisfaction in dating and married couples. Jr. of personality and social psychology, vol.91 No.1, p 34-48.

[7] Kurdek I. A (1993): Predicting marital Dissolution; A 5-years prospective longitudinal study of newly used couple. Jr. of personality and social psychology. 64, 221-242.

[8] Prem singh J. G. & Philip S.R (2014): A study on increasing the divorce rate in Kerala. Jr. of humanities and social science 19(6) p 58-60.

[9] Shah. A. (1995): Clinical validity of marital quality scale, Nimbans press, journal. (1) p 29-31.

[10] Yadav A. K., Kumar S & Chaudhary R. (2020): Mathematical model for domestic violence. IOSR Journal of Humanities and Social Science (IOSR-JHSS) Vol. 25, issu.4 Series-3 p 17-18.