

Design and Implementation of a Smart Campus Management System Using AI and IoT

Srushti Khoke, Drishti Sahu

G H Raisoni University, Amravati, Maharashtra, India

Abstract

The Smart Campus Management System using Artificial Intelligence (AI) and Internet of Things (IoT) is a new and innovative idea to transform conventional educational institutions into a smart and automated environment. In many educational institutions like colleges, campus management activities such as attendance management, energy management, security management, and resource management are still done manually, which results in inefficiency and increased operating costs [1]. The objective of this research is to introduce a smart and automated system that uses various technologies like IoT and AI to transform the educational institution. The proposed model will be a smart and automated system that uses various devices like sensors, RFID, smart meters, and security cameras to gather information and data regarding various activities on the campus. The gathered information and data will be sent to a cloud environment, where AI will be used to analyze the gathered information and produce meaningful results. The proposed model will be a smart and automated system that will be capable of handling activities like automated attendance management, smart energy management, security management, and many more. The proposed model will be a smart and automated system that will be capable of handling activities like automated attendance management, smart energy. Moreover, the proposed smart campus system encourages scalability and flexibility, which enables educational institutions to extend or adjust system components according to their needs. The proposed system's modular design ensures smooth integration of new IoT devices and AI models without affecting ongoing processes. With the use of cloud computing, the proposed system enables centralized data storage, remote monitoring, and real-time access to information for administrators and authorized users. This centralized approach to data management enhances transparency, simplicity, and the ability of institutions to efficiently manage multiple campus facilities using a single platform. The proposed smart campus management system focuses on data security and privacy, which are ensured through the use of authentication systems, secure communication channels, and restricted access to confidential data. AI-based analytics can also help with predictive maintenance, which can detect possible failures in the system, irregular energy consumption, or security breaches before they happen. This proactive strategy not only improves campus safety and dependability but also helps with long-term cost savings and sustainable

development. In summary, the proposed system illustrates how AI and IoT technologies can transform campus management, enhance efficiency, and help with the development of smart and sustainable educational institutions.

KEYWORDS: *Smart Campus, Artificial Intelligence, Internet of Things, Campus Automation, Cloud Computing, Smart Energy Management, Intelligent Security Systems.*

1. Introduction

In this regard, the role of Artificial Intelligence (AI) would be very significant in analyzing the collected data and The rapid advancements in digital technologies have impacted various sectors and domains, including the educational sector. Educational institutions like colleges and universities have a large area to cover, with various activities happening on a daily basis. These activities include student attendance tracking, energy consumption management, security surveillance, and allocation of various resources. These activities were mostly done manually or individually, resulting in inefficiency and increased costs [2].

With the advent of Internet of Things (IoT), it is possible to connect various physical devices like sensors, RFID readers, smart meters, and surveillance cameras to the internet and obtain continuous data collection. The devices provided by IoT technology can be used to monitor the activities happening on the educational campuses and obtain accurate information regarding student attendance, energy consumption, security status, and infrastructure utilization. Though collecting this information would be beneficial, it would be insufficient to take intelligent decisions making decisions accordingly. The AI algorithms can be used to analyze the collected data and obtain useful information that can be used to take decisions automatically. Moreover, the integration of AI and IoT in campus management practices promotes sustainability by minimizing energy waste through smart lighting and temperature management systems. Additionally, it enhances administrative effectiveness in automating processes such as attendance management, timetable organization, and facility management. By embracing such cutting-edge technologies, campuses can establish a connected and future-ready campus ecosystem that addresses the increasing demands of modern education [3].

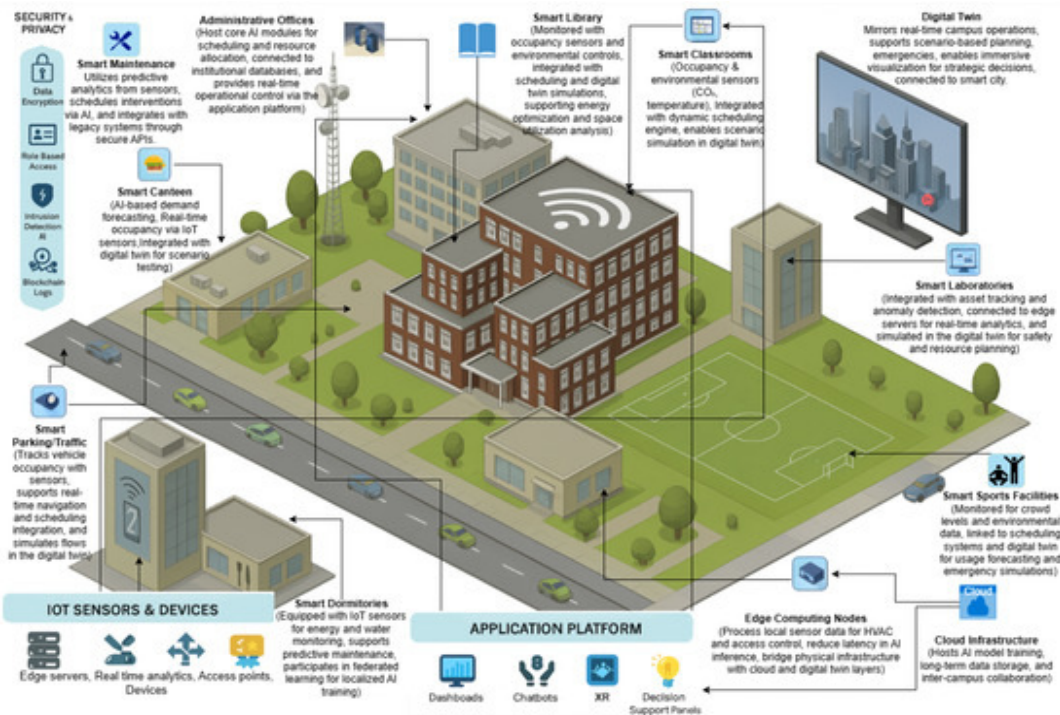


Fig 1. Iot Sensors and Application Platform in aSmart Campus Environment

2. Literature Review

The adoption of smart technologies in educational institutions has increased significantly with the growth of Artificial Intelligence (AI) and Internet of Things (IoT). Researchers across the globe have proposed various smart campus models aimed at improving operational efficiency, sustainability, and safety. These studies highlight the importance of automation and intelligent decision-making in managing large and complex campus environments [4]. Many researchers have proposed IoT-based smart infrastructure systems where sensors are deployed across classrooms, laboratories, hostels, and administrative buildings. These sensors monitor parameters such as temperature, humidity, lighting conditions, and occupancy levels. Based on the collected data, automated control systems manage lighting, ventilation, and air conditioning to reduce unnecessary energy consumption. Although these systems show promising results in energy efficiency, they often lack adaptive intelligence and depend heavily on fixed threshold values [5].

Several studies focus on smart attendance management systems using RFID cards, QR codes, or mobile-based solutions. These systems reduce the time required for attendance marking and minimize human errors. However, RFID-based systems are prone to issues such as card sharing and unauthorized access. To overcome these limitations, some researchers introduced biometric-based attendance systems using fingerprints or facial recognition. While these approaches improve accuracy, they raise concerns regarding privacy, cost, and computational complexity [6]. In terms of security and surveillance, researchers have developed IoT-enabled camera networks integrated with motion sensors and alarm systems. These systems enable continuous monitoring of sensitive campus areas. Recent studies have explored AI-based video analytics to detect suspicious activities automatically. Techniques such as facial recognition and anomaly detection improve campus security, but their performance depends heavily on data quality, camera placement, and processing capabilities.

Cloud computing plays a vital role in smart campus solutions by providing scalable storage and processing power. Many researchers have proposed cloud-based smart campus architectures where data collected from IoT devices is stored and processed centrally. Cloud platforms enable real-time access to data and support advanced analytics. However, challenges such as data latency, network reliability, and security vulnerabilities remain significant concerns [7].

The integration of machine learning algorithms with IoT systems has been explored to enhance predictive and decision-making capabilities. Machine learning models are used for predicting energy demand, detecting abnormal power usage, and identifying unusual movement patterns. These intelligent systems outperform traditional rule-based systems by adapting to changing conditions. Despite their advantages, many studies focus only on a single application area, such as energy management or security, rather than a holistic campus solution. Recent literature emphasizes the need for integrated smart campus management systems that combine multiple functionalities into a unified platform. Some researchers proposed modular architectures that allow institutions to gradually adopt smart technologies. However, the complexity of integration, high initial cost, and lack of standardization hinder large-scale implementation [8].

From the reviewed literature, it is evident that while significant progress has been made in applying AI and IoT to campus management, existing solutions are often fragmented and application-specific. There is a clear research gap in designing a comprehensive, intelligent, and scalable smart campus management system that integrates attendance automation, energy optimization, security monitoring, and resource management within a single framework. This research addresses this gap by proposing an AI- and IoT-based smart campus management system that leverages real-time data, cloud computing, and intelligent analytics to enhance overall campus efficiency and sustainability. The existing literature also highlights the

importance of cloud computing in achieving centralized data storage, scalability, and remote system access. However, most of the existing systems are restricted to certain modules like attendance or energy management and do not have complete integration, real-time intelligence, and decision-making capabilities. This paper extends the previous work by introducing an integrated smart campus management system that uses AI, IoT, and cloud computing to provide a comprehensive, secure, and scalable solution for modern educational institutions.

3. Research Methodology

3.1. System Analysis and Requirement Identification

In this phase, the existing management systems of the campus are studied, and the limitations of those systems, such as attendance, energy consumption, and lack of real-time monitoring, are identified. The requirements, both functional and non-functional, are defined based on the needs of the campus. A multi-layer architecture is designed, which includes IoT devices, communication network, cloud platform, and AI-based analytics layer. IoT devices, including sensors, RFID devices, smart energy meters, and security cameras, are used to collect real-time data from the campus. These devices communicate with the central system through wireless communication technologies, including Wi-Fi or MQTT [9]. Data Collection Using IoT Devices IoT devices are used to collect real-time data from different environments of the campus. The devices used for collecting data are as follows:

3.2. Cloud-Based Data Storage and Management

The cloud platform will be used as a centralized storage facility for storing large volumes of real-time data received from IoT devices. Data preprocessing techniques, such as filtering, normalization, and aggregating, will be used to enhance the quality of the data before analysis [10]. Artificial Intelligence techniques will be applied to analyze the preprocessed data. Machine learning algorithms will be used to analyze the usage pattern of the data. For example, AI will be used to analyze the pattern of energy consumption. The modules of the proposed system, namely attendance management, energy management, and security monitoring, will be integrated with each other. A dashboard will also be developed for the administrator to monitor all activities in the campus. The performance of the proposed system will be evaluated based on factors such as accuracy, response time, energy efficiency, and reliability of the system. The performance of the proposed system will also be compared with the manual system.

3.1 Result Analysis and Validation

The results obtained from the proposed system will be analyzed to validate the effectiveness of the proposed system. The analysis demonstrates how AI and IoT integration improves campus management by reducing manual effort, optimizing resources, and enhancing security.

The result of the evaluation shows that the proposed Smart Campus Management System is very effective in increasing the efficiency of campus management compared to the traditional manual system. The automated attendance system reduces the time and errors associated with manual attendance, and the AI-based energy optimization system results in a significant reduction in unnecessary energy consumption. The real-time surveillance and intelligent monitoring system also improves the security of the campus by reacting quickly to any irregular activity. In addition, the

combination of cloud computing, AI, and IoT technologies ensures the scalability and flexibility of the proposed system, making it possible to apply the proposed model to campuses of varying sizes. The proposed system has a centralized architecture that makes it easy to manage data and provides administrators with valuable information in real-time. The proposed methodology is thus a reliable, intelligent, and sustainable solution for campus management.

The methodology of research used in this research work is centered on the design, development, and evaluation of a Smart Campus Management System using Artificial Intelligence (AI) and Internet of Things (IoT) technologies. First, the existing campus management systems are analyzed to understand the key shortcomings such as manual attendance systems, inefficient use of energy, absence of real-time monitoring, and delayed decision-making. Based on this analysis, the functional and non-functional requirements are determined to fulfill the requirements of the campus. A multi-layered system architecture is designed, which includes IoT devices, communication networks, cloud infrastructure, and an AI-driven analytics layer. IoT devices such as sensors RFID readers, smart energy meters, and security cameras are placed throughout the campus to capture real-time data regarding attendance, environmental factors, energy usage, and security.

These devices communicate with the central system through wireless communication techniques such as Wi-Fi and MQTT protocols, which facilitate the continuous and seamless flow of data. Once the system is implemented, it is thoroughly tested for its performance, accuracy, and reliability. The system is tested for functionality to ensure that each module functions as expected. The performance of the system is also tested to check the response time and stability of the system under varying loads. The AI models are validated for their accuracy using test data sets. For the effective deployment of the system, data security and privacy are considered with high priority. Encryption methods and access controls are used to secure confidential information. Ethical standards are applied to ensure transparency in AI decision-making and the use of surveillance systems in the campus setting. In this research, a mixed-methodology approach is used to design and develop a Smart Campus Management System based on Artificial Intelligence (AI) and Internet of Things (IoT) technologies. The research work starts with a literature review to examine the current state of smart campus designs, IoT-based monitoring systems, and AI-based decision-making models. Based on the analysis of the existing gaps, a system design is proposed that combines IoT sensors, edge devices, cloud computing, and AI models. Data is gathered from simulated and real-world campus environments, such as attendance tracking, energy usage monitoring, security systems, and classroom management.

The implementation part of the research work involves the development of a prototype system using IoT hardware components and software tools for data processing and visualization. The data gathered from the campus environment is analyzed using AI models such as machine learning for predictive and optimization analysis. The system performance is measured based on factors such as accuracy, efficiency, scalability, and system response time. The findings are compared with the conventional campus management system to evaluate the effectiveness of the system in improving efficiency, automation, and decision-making. Cloud-based data storage and management is the

process of storing data in remote servers that can be accessed via the internet instead of storing data on personal computers or storage devices. Cloud service providers have large data centers where data is stored, backed up, and managed in a secure manner. This enables individuals and organizations to access their data at any time and from anywhere using devices connected to the internet. Cloud-based management systems have functionalities such as automatic data backup, real-time data synchronization, data encryption, and user access control to ensure data security and reliability. Organizations can easily increase their storage capacity according to their requirements and work together more effectively by sharing data with each other. Cloud storage makes data management more flexible, secure, and efficient.

internet, rather than storing data in local computers or hard drives. The remote servers are managed by cloud service providers, which provide data availability, backup, and security. Scalable storage solutions are provided by popular cloud service providers such as Amazon Web Services, Microsoft Azure, and Google Cloud, which enable users to store a large amount of data without requiring any infrastructure. This makes cloud storage a cost-effective and flexible solution for users, who can scale up or down depending on their requirements. Cloud data management is the process of managing data stored in the cloud. It includes data organization, security, processing, and maintenance. It includes functionalities such as automatic data backup, data recovery, encryption, access management, and real-time synchronization.

Cloud-based data storage and management is the process of storing data in remote servers that can be accessed via the



Fig 2. Implementation of a Smart Campus Management System Using AI and IoT

4. Result

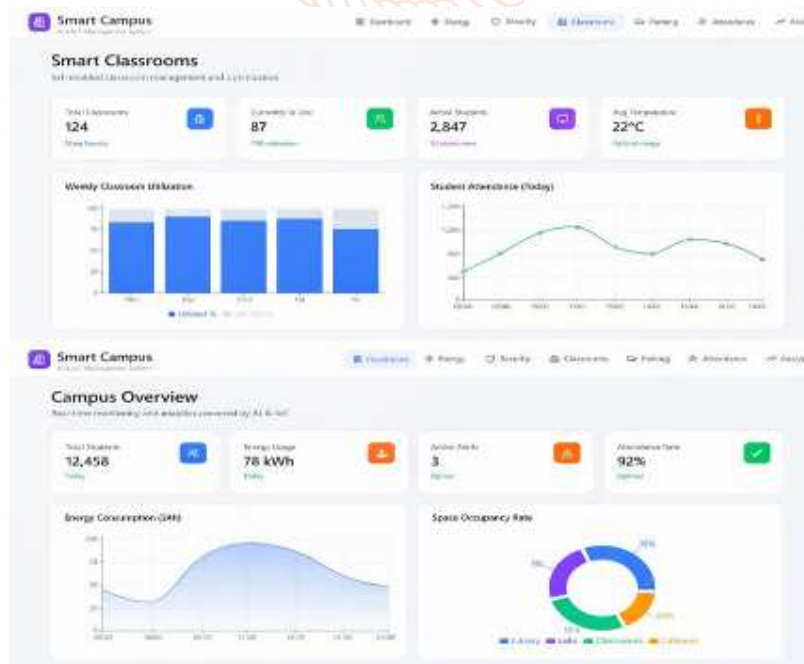


Fig.3 Smart Campus Overview

5. Conclusion

The Smart Campus Management System based on Artificial Intelligence (AI) and Internet of Things (IoT) is a revolutionary change in the manner of managing the infrastructure, administration, security, and academic activities of educational institutions. In the current digital age, the conventional campus management system is not adequate to meet the growing requirements of operational efficiency, sustainability, and real-time monitoring. The manual system is time-consuming, prone to errors, and lacks analytical insights. The combination of AI and IoT technologies offers an integrated, automated, and intelligent solution to address these challenges and develop a smart, connected, and future-ready campus environment [11]. The proposed system utilizes the capabilities of IoT devices such as sensors, RFID tags, smart meters, surveillance cameras, and environmental monitoring systems to collect data continuously in real time. The devices are connected to each other and communicate through wireless networks and cloud services, ensuring smooth flow of data. The data collected is analyzed by AI algorithms to provide insights and make decisions. The interaction between hardware and software enables the creation of a dynamic campus.

One of the key benefits of having a Smart Campus Management System is the improvement in operational efficiency. Smart attendance systems with RFID or biometric technology eliminate the need for manual attendance recording and proxy attendance problems. AI-driven timetable optimization systems ensure optimal class allocation and avoid conflicts. Smart energy management systems track electricity consumption in classrooms, labs, and hostels, automatically regulating lighting and air conditioning according to the number of people present. This not only prevents energy losses but also cuts down operational expenses significantly [12]. Another area where AI and IoT technology bring a paradigm shift is in campus security. Smart security systems with AI-driven facial recognition and anomaly detection capabilities improve campus security. Real-time notifications can be sent for unauthorized entry, suspicious events, or emergencies. IoT-based smart gates and access control systems further improve the security system. Emergency response systems with AI capabilities can also analyze risk patterns and respond to critical events faster.

Sustainability and environmental management are also significant areas where the Smart Campus system makes a substantial impact. IoT devices are capable of monitoring water usage, air quality, temperature, and waste management systems. AI algorithms can analyze usage patterns and provide suggestions for effective resource management. Smart irrigation systems for campus gardens and automated waste segregation systems encourage sustainable practices. By effectively managing resource use, educational institutions can make a substantial contribution to reducing their carbon footprint and achieving sustainable development objectives [13]. Another significant effect of the proposed system is enhanced administrative transparency and decision-making. With the help of centralized dashboards and real-time analytics, administrators can effectively track activities on campus. Data visualization techniques enable administrators to recognize patterns and make informed decisions. Predictive analytics can forecast student enrollment, maintenance, and resource requirements.

Moreover, the Smart Campus Management System improves the overall student experience. Mobile apps and smart portals can be used to offer students real-time updates about their attendance, class schedules, examination notices, and campus events. Chatbots enabled with AI capabilities can help students in addressing their queries related to academics or administration. Learning analytics can be used to analyze students' performance and suggest improvements. These technologies bring about a more engaging, interactive, and student-centric learning experience. However, despite its numerous benefits, the implementation of a Smart Campus system also has some challenges. The initial setup cost for the installation of IoT devices, infrastructure development, and AI system implementation may be quite high. Cybersecurity threats and data privacy issues need to be handled by implementing robust encryption methods, secure authentication systems, and data protection policies. System maintenance and technical expertise are also required for smooth operation. Proper planning, phased implementation, and government or institutional funding support can help overcome these challenges.

One of the most important advantages of the Smart Campus framework is its scalability. The system can be expanded incrementally by incorporating other modules such as smart transportation management systems, health monitoring systems, AI-based examination systems, and predictive student performance analysis. Cloud architecture helps to provide flexibility and remote access, which will enable institutions to adjust to future technological developments without having to make significant changes to their structure. In conclusion, the Smart Campus Management System based on Artificial Intelligence and Internet of Things is an all-encompassing, intelligent, and scalable system that will help to transform campus management and infrastructure. It will help to improve efficiency, enhance security, facilitate sustainability, enable better decision-making, and provide a rich experience for students. Although there are limitations to the system in terms of cost, security, and complexity, the advantages far outweigh the disadvantages. As the technologies of Artificial Intelligence and Internet of Things continue to develop, their integration into educational institutions will become increasingly important. The Smart Campus will not only help to facilitate the transformation of educational institutions into digital institutions but also provide the foundation for innovative, secure, sustainable, and technologically advanced educational environments of the future [14]. From a security standpoint, AI-driven surveillance systems and anomaly detection systems help in proactive risk analysis and quick response measures. The integration of smart access control systems further enhances the security of the campus by controlling and monitoring the entry points. Moreover, the use of centralized dashboards and real-time visualization systems helps administrators in making evidence-based decisions, thereby shifting from a reactive management style to a predictive management style.

From an academic standpoint, the Smart Campus system promotes a technology-supported learning environment. Intelligent attendance systems, automated scheduling systems, and AI-driven academic analytics help in providing personalized educational support to students. By leveraging digital platforms and cloud services, the system helps in ensuring smooth communication between students, faculty

members, and administrative departments, thereby promoting transparency and consistency in institutional operation [15]. This research work has been able to successfully demonstrate a structured and comprehensive approach for designing and implementing a Smart Campus Management System based on Artificial Intelligence (AI) and Internet of Things (IoT) technologies. The research work started with a thorough analysis of the current campus management system, which revealed some significant drawbacks such as manual attendance systems, inefficient use of energy, delayed decision-making, and the lack of real-time monitoring. The proposed system aims to overcome these drawbacks and thus forms a solid foundation for the transformation of conventional campuses into smart and automated campuses.

The proposed multi-layered architecture is able to successfully combine IoT devices, communication networks, cloud storage solutions, and AI-powered analytics. The IoT devices, including RFID systems, environmental sensors, smart energy meters, and security cameras, are capable of continuous real-time data acquisition on the campus. The cloud storage solution helps in efficient data management, scalability, and accessibility, while data preprocessing techniques improve the quality and accuracy of the acquired data. Artificial Intelligence and machine learning algorithms are used extensively in deriving relevant and useful insights from the collected data. By analyzing usage patterns and identifying anomalies, the system facilitates intelligent decision-making for energy optimization, attendance management. In addition, the deployment of the smart campus framework promotes digital transformation in the education sector by lessening reliance on manual processing and minimizing the occurrence of human errors. The application of AI analytics in the system improves the system by learning from past and current data, thereby providing more accurate predictions and campus management. The proposed system promotes environmental sustainability by encouraging efficient use of energy and smart resource management, which is in line with the green campus concept. In the long run, the integrated smart campus system can improve the quality of education and create a smart learning environment.

Reference

- [1] S. Rathi, "Alternative approaches for better municipal solid waste management in Mumbai, India," *Waste Management*, vol. 26, no. 10, pp. 1192–1200, 2006.
- [2] M. Sharolyn, K. Ahmad, G. Mahmood, and R. Trivedi, "Municipal solid waste management in Indian cities: A review," *Waste Management*, vol. 28, no. 2, pp. 459–467, 2008.
- [3] T. Anagnostopoulos, A. Zaslavsky, and A. Medvedev, "Robust waste collection exploiting cost efficiency of IoT potentiality in smart cities," in *Proc. Int. Conf. Recent Advances in Internet of Things (RIOT, IEEE)*, 2015, pp. 1–6.
- [4] F. Folinat, Y. S. Low, and W. L. Yeow, "Smarten: Smart waste management system," in *Proc. IEEE 10th Int. Conf. Intelligent Sensors, Sensor Networks and Information Processing (ISSNIP)*, 2015, pp. 1–2.
- [5] S. Umuganda, V. Ganapathy, and R. Balaji, "Efficient IoT-based smart bin for clean environment," in *Proc. Int. Conf. Communication and Signal Processing (ICCCSP)*, IEEE, 2018, pp. 715–720.
- [6] C. J. Baby, H. Singh, A. Srivastava, R. Dhawan, and P. Mahalakshmi, "Smart bin: An intelligent waste alert and prediction system using machine learning approach," in *Proc. IEEE Int. Conf. Wireless Communication*, 2017.
- [7] M. Mustafa and K. K. Azir, "Smart bin: Internet of Things garbage monitoring system," *MATEC Web of Conferences*, vol. 140, Article no. 01030, 2017.
- [8] W. Pereira, S. Parulekar, S. Patankar, and V. Kamble, "Smart bin: Waste segregation and optimization," in *Proc. Amity Int. Conf. Artificial Intelligence (AICAI)*, IEEE, 2019, pp. 274–279.
- [9] C. Baude et al., "Self-driving cars: A survey," *Expert Systems with Applications*, Article no. 113816, 2020.
- [10] M. Bojarski et al., "End-to-end learning for self-driving cars," *arXiv preprint arXiv: 1604.07316*, 2016.
- [11] A. K. Jain, "Working model of self-driving car using convolutional neural network, Raspberry Pi and Arduino," in *Proc. 2nd Int. Conf. Electronics, Communication and Aerospace Technology (ICECA)*, IEEE, 2018, pp. 1630–1635.
- [12] T.-D. Do, M.-T. Duong, Q.-V. Dang, and M.-H. Le, "Real-time self-driving car navigation using deep neural network," in *Proc. 4th Int. Conf. Green Technology and Sustainable Development (GTSD)*, IEEE, 2018.
- [13] Alghamdi and S. Shetty, "Survey toward a smart campus using the Internet of Things," in *Proc. IEEE 4th Int. Conf. Future Internet of Things and Cloud (iCloud)*, 2016, pp. 235–239.
- [14] B. N. Silva, M. Khan, and K. Han, "Towards sustainable smart cities: A review of trends, architectures, components, and open challenges," *Sustainable Cities and Society*, vol. 38, pp. 697–713, 2018.
- [15] L. D. Xu, W. He, and S. Li, "Internet of Things in industries: A survey," *IEEE Transactions on Industrial Informatics*, vol. 10, no. 4, pp. 2233–2243, 2014.
- [16] H. Al-Turjeman, "Smart campus monitoring and management using IoT sensors," *International Journal of Information Technology*, vol. 11, no. 3, pp. 589–597, 2019.
- [17] S. Somani, S. Solanki, and A. Gohil, "IoT-based smart campus for efficient management," in *Proceedings of the International Conference on Smart Computing and Informatics*, Springer, 2018, pp. 161–169.
- [18] M. A. Razzaque, M. Milojevic-Jeric, A. Palade, and S. Clarke, "Middleware for Internet of Things: A survey," *IEEE Internet of Things Journal*, vol. 3, no. 1, pp. 70–95, 2016.
- [19] P. P. Ray, "A survey on Internet of Things architectures," *Journal of King Saud University – Computer and Information Sciences*, vol. 30, no. 3, pp. 291–319, 2018.
- [20] A. Botta, W. De Donato, V. Persico, and A. Escape, "Integration of cloud computing and Internet of Things: A survey," *Future Generation Computer Systems*, vol. 56, pp. 684–700, 2016.