

A Study of Wireless Network Technologies and Their Applications

Mansi Bhojar, Aditya Bisen

G H Raisoni University, Amravati, Maharashtra, India

Abstract

Wireless networks are essential to contemporary communication systems because they allow devices like laptops, cell phones, and Internet of Things systems to connect seamlessly. The need for dependable, effective, and secure wireless communication has grown dramatically with the quick development of cloud computing, mobile technologies, and Internet of Things applications. Instead of using physical cables, wireless networks use electromagnetic waves across particular frequency ranges to transfer data. Network management systems, wireless clients, routers, and access points or base stations are some of their primary parts. These networks can function in either ad hoc mode, where devices connect directly, or infrastructure mode, which uses centralized access points. Channel allocation, modulation methods, signal strength, and bandwidth availability all have an impact on performance. Signal quality is also impacted by environmental elements like as physical barriers, weather, and interference. Signal interference, security risks, and scalability problems are major obstacles. Modern technologies like OFDM, MIMO, and beamforming improve transmission reliability and efficiency, enabling better performance in wireless systems of the future. Because wireless network technologies allow for uninterrupted connectivity without the limitations of physical infrastructure, they have completely changed modern communication. Wireless technologies are essential for facilitating data transfer across a variety of settings and applications, from wide-area cellular systems to personal area networks. Major wireless network technologies, such as Wi-Fi, Bluetooth, Zigbee, cellular networks (4G and 5G), satellite communication, and newly developed Low Power Wide Area Networks (LPWAN), are thoroughly examined in this study. Its architecture, working principles, frequency bands, data rates, coverage range, power consumption, and security features are all examined in this article. The report also looks at how these technologies are used in a variety of industries, including transportation, smart cities, healthcare, smart homes, industrial automation, and Internet of Things (IoT) systems. Performance measures like as bandwidth efficiency, latency, scalability, dependability, and energy efficiency are used to assess each system. By highlighting the advantages and disadvantages of several wireless standards, a comparison study aids in determining which ones are best suited for a given application. The study also addresses contemporary issues such spectrum shortages, interference control, security flaws, energy limitations, and quality-of-service demands. Next-generation wireless advances, enormous IoT connection, edge computing integration, and 5G deployment are among the emerging topics that are covered. The study's conclusions give a systematic understanding of wireless network technologies and shed light on how they are changing to enable the world's digital revolution.

KEYWORDS: *Wireless Communication, Wireless Networks, Communication Systems, Network Architecture, Data Transmission, Signal Propagation, Bandwidth Optimization, Bandwidth Constraints, Quality of Service (QoS), Network Performance Analysis, Performance Optimization, Signal Interference, Network Security, Scalability, Mobile Computing, Cloud Computing, Internet of Things (IoT), Wi-Fi, Bluetooth, 4G/5G Wireless Networks, Mobile Ad Hoc Networks (MANETs), Wireless Sensor Networks (WSNs), Cognitive Radio Networks, Throughput, Latency, Energy Efficiency.*

1. Introduction

Effective and dependable communication over wireless networks has become much more important in recent years due to the extensive usage of smartphones, laptops, smart devices, and the Internet of Things (IoT) applications. Numerous services, including voice communication, data transfer, streaming multimedia, and real-time applications, are supported via wireless networks. Sensor networks over wireless cellular networks, Bluetooth, Wi-Fi, and other technologies have become essential components of contemporary digital infrastructure, facilitating smooth communication across various platforms. Notwithstanding their benefits, wireless networks have a number of issues that compromise security and performance. Network congestion, data loss, signal interference, capacity limitations, and security attack susceptibility are still big worries. Resolving these issues has grown more crucial as network demand keeps rising in order to guarantee system scalability, data security, and quality of service [4]. The purpose of this research paper is to examine the basic ideas of wireless networks, including their architecture, underlying theories, and essential technologies. To provide readers a thorough grasp of the subject, it also looks into the main issues and most recent advancements in wireless networking. This paper emphasizes the significance of wireless networks in contemporary communication systems and their role in influencing the direction of digital connectivity by examining current trends and applications. Depending on its coverage area and intended use, wireless networks can be divided into a number of categories, including wireless personal area networks (WPAN), wireless local area networks (WLAN), wireless metropolitan area networks (WMAN), and wireless wide area networks (WWAN). In terms of scalability, energy consumption, bandwidth, and range, each type is made to satisfy particular communication requirements. In order to maximize performance and spectrum usage, current wireless network designs also include technologies such as beamforming, software-defined networking (SDN), multiple input multiple output (MIMO), and orthogonal frequency division multiplexing (OFDM). Wireless networks have a number of technological issues despite being widely used. The goal of this research paper is to present a thorough

analysis of wireless network designs, applications, protocols, and technology [2].

The performance metrics, including throughput, latency, packet loss, bandwidth efficiency, and energy consumption, are assessed while the security and scalability concerns of contemporary wireless systems are examined. Emerging trends like 6G research, edge computing integration, AI-based network optimization, and green communication technologies are also included in the study. This research aims to provide important insights into the creation of dependable, secure, and high-performance wireless communication systems for next digital infrastructures by investigating both theoretical underpinnings and real-world applications [5]. Since wireless networks allow devices to connect and exchange data without the use of physical connections, they have become an essential part of contemporary communication systems. Wireless networks make it easier to communicate over short, medium, and long distances by utilizing electromagnetic waves including radio frequency (RF), infrared, and microwave communications. From simple first-generation (1G) analog communication systems to sophisticated fifth-generation (5G) digital networks that enable ultra-high data rates, huge device connection, and ultra-low latency, wireless networking has advanced over time. Innovative applications like as cloud services, telemedicine, driverless vehicles, smart cities, industrial automation, and the Internet of Things (IoT) have been made possible by this advancement. Wireless Personal Area Networks (WPAN), Wireless Local Area Networks (WLAN), Wireless Metropolitan Area Networks (WMAN), and Wireless Wide Area Networks (WWAN) are some of the types of wireless networks that can be distinguished according to their coverage area and intended use. In terms of scalability, energy consumption, bandwidth, and range, each type is made to satisfy particular communication requirements [3].

In order to maximize performance and spectrum usage, contemporary wireless systems also include technologies such as beamforming, software-defined networking (SDN), multiple input multiple output (MIMO), and orthogonal frequency division multiplexing (OFDM). By allowing devices to communicate without requiring physical cable connections, wireless network technologies have completely changed modern communication. Wireless communication's explosive growth over the last two decades has drastically changed the economic, industrial, and personal spheres [3]. Wireless technologies are currently the foundation of worldwide connection, ranging from basic short-range communication systems to fast broadband cellular networks. The development and implementation of various wireless

networking technologies has been spurred by the growing need for mobility, flexibility, and real-time data access. Wireless network technologies are used in many different industries, such as transportation systems, military communications, smart cities, smart homes, healthcare monitoring, industrial automation, and environmental monitoring [8]. The Internet of Things' (IoT) explosive growth in recent years has further raised the need for wireless communication by facilitating effective communication across billions of networked devices. Knowing the features and appropriateness of each wireless technology for a given application is crucial since each one has unique benefits in terms of range, data rate, latency, power consumption, scalability, and cost. Wireless networks encounter a number of difficulties despite their extensive use, including scarce spectrum, signal interference, security flaws, energy efficiency limitations, and quality-of-service demands. The demand for thorough research and comparative analysis of wireless network technologies is growing as cutting-edge technologies like 5G, edge computing, and next-generation wireless systems continue to develop [4].

Wireless network technologies are used in many different fields, such as transportation systems, education, entertainment, smart homes, healthcare monitoring, and industrial automation. Strong and effective wireless communication infrastructures are also essential for emerging technologies like the Internet of Things (IoT), smart cities, and driverless cars. The purpose of this study is to investigate the development, underlying theories, benefits, drawbacks, and practical uses of the main wireless network technologies. We may assess their influence on society and their part in influencing the direction of global connectivity more accurately if we are aware of their traits and deployment situations [9]. Wireless network technology have many uses. They make remote patient monitoring and telemedicine possible in the medical field. They assist virtual classrooms and e-learning systems in the field of education. They provide businesses with remote work, cloud computing, and mobile commerce. Furthermore, wireless technologies are essential to the Internet of Things (IoT), driverless vehicles, smart cities, and agricultural monitoring [7]. The development and implementation of various wireless networking technologies has been spurred by the growing need for mobility, flexibility, and real-time data access. Wireless network technologies are used in many different industries, such as transportation systems, military communications, smart cities, smart homes, healthcare monitoring, industrial automation, and environmental monitoring [8].



Fig 1. Conceptual Framework of Wireless Communication Systems

2. Literature Review

Over the past few decades, wireless networks have seen a significant evolution, moving from basic local area networks to sophisticated, intelligent worldwide infrastructures. Fundamentally, a wireless network transmits data using electromagnetic waves in a variety of frequency bands to facilitate mobility, scalability, and ubiquitous access between devices that are not physically connected. According to research, 5G wireless communication is an important innovation that uses a variety of frequency bands, from sub-6 GHz to millimeters waves, and the latest technologies like massive MIMO and edge computing that offers improved performance metrics. The focus of research has switched beyond 5G networks to 6G technologies and higher, which seek to include cyber- physical systems, AI intelligence, and sensing into wireless infrastructures [7].

According to academics, this shift represents a reinterpretation of wireless networks as intelligent, globally integrated ecosystems that may facilitate ubiquitous connectivity and real-time analytics, rather than just being communication systems. Beyond standards, basic research has concentrated on modeling and optimizing wireless networks. Researchers can statistically describe the geographical characteristics of wireless networks using methods like stochastic geometry models, which aid in the prediction and management of performance measures including coverage probability, connection, and interference distributions. These models inform the approach to dense deployments and heterogeneous infrastructures by bridging the gap between theoretical analysis and network design. Intelligent surfaces, also known as intelligent reflecting surfaces or meta surfaces, are another new architectural innovation [13]. By actively regulating wave propagation, these programmable electromagnetic structures have the ability to change the radio environment. According to studies, these surfaces could improve signal quality, lower energy costs, and allow for more sophisticated features in next wireless systems, especially in the context of 6G networks. Over the course of several decades, it has evolved from early analog and radio systems to sophisticated digital standards, covering anything from industrial automation to personal mobile use. These advancements have changed the way that information is accessible and shared around the world [8].

Wireless technologies have improved in terms of data throughput, coverage, and dependability with each generation, from 2G to 5G. According to recent studies, 5G networks are a key facilitator of massive machine-type communication and ultra-reliable low latency communication (URLLC), both of which are essential for developing applications like telemedicine, driverless cars, and smart infrastructures. Academic research is quickly moving toward sixth generation (6G) wireless networks as 5G gets closer to being widely deployed [5]. According to the literature, 6G, intends to incorporate global IoT networks, integrated sensing, and

artificial intelligence in addition to faster speeds. With almost instantaneous connectivity and highly flexible services, these networks are expected to support the Internet of Everything. Stochastic geometry models, which predict network performance including coverage, capacity, and interference patterns using probabilistic and geographical approaches, are used by researchers to systematically evaluate the behavior of wireless networks. Designing reliable and scalable wireless systems requires this theoretical paradigm, particularly in heterogeneous deployments and crowded metropolitan areas. Simultaneously, machine learning has drawn interest as a means of improving network layer performance. According to surveys, ML-based methods can enhance PHY, MAC, and network layer quality-of- service management, traffic prediction, and resource allocation [9]. These data-driven strategies are particularly useful in dynamic wireless contexts where conventional techniques find it difficult to quickly adapt. Over the past few decades, wireless network technologies have advanced significantly, allowing for previously unheard-of levels of mobility and connectedness in both the personal and professional spheres. By describing wireless channel behaviour and propagation models—both essential for creating reliable wireless systems—early research, such that done by Rappaport (1996), set the foundation. With the emergence of cellular networks (GSM, 3G, and 4G) and wireless standards like Wi-Fi (IEEE 802.11), a lot of study was done on how to maximize bandwidth use, lower latency, and increase reliability [9]. IoT devices are intrinsically resource-constrained and susceptible to a variety of security risks, such as replay attacks, eavesdropping, and unauthorized data access, according to early study by Roman et al. (2011). Low-power IoT networks

cannot afford the significant energy and compute expenses associated with conventional security techniques that were created for traditional computing settings [2]. The necessity of context-aware and lightweight security measures tailored to IoT infrastructures was highlighted in this seminal paper. Sicari et al. (2015) conducted a survey of various IoT security frameworks and came to the conclusion that, despite extensive research on confidentiality, integrity, and authentication techniques, there remains a constant trade-off between system efficiency and security strength [9]. In particular, asymmetric cryptographic methods like RSA offer strong encryption but dramatically raise processing overhead and power consumption—two major drawbacks for battery-operated Internet of Things devices. An enhanced AES variant designed for Internet of Things applications was suggested by Zhang et al. (2017), which decreased internal rounds while preserving respectable security levels. Although symmetric systems necessitate secure session key distribution, comparative research by Bogdan et al. (2019) further showed that symmetric encryption performs better than asymmetric encryption in terms of speed and energy efficiency [9].

3. Research Methodology

This study's methodology is centered on the methodical examination and assessment of wireless network performance through the application of both theoretical and experimental techniques. To guarantee accuracy, dependability, and relevance of results, the study is conducted in stages. An extensive examination of current wireless network research papers, journals, IEEE publications, and technical reports is carried out. This aids in comprehending contemporary technology, typical problems, performance indicators, and weaknesses in present solutions [8]. The suggested study's design is informed by the results of the literature review. A suitable network simulation program, such as NS-2, NS-3, or MATLAB, is used to implement the suggested network model. In order to replicate the characteristics of a real wireless network, simulation parameters such as bandwidth, packet size, simulation time, and routing protocols are meticulously set. Key performance measures are defined in order to assess the wireless network's efficacy. These consist of Rate of Throughput, Total delay, ratio of packet delivery, Overhead in the network, Use of energy (if applicable) [6]. These measurements provide performance comparisons a numerical foundation. By altering network parameters including node density, mobility speed, and traffic load, several simulation runs are carried out. It is observed and documented how the wireless network behaves in various situations. This aids in the analysis of network efficiency, scalability, and stability. Identifying major wireless network obstacles, such as bandwidth limitations, signal interference, packet loss, mobility problems, and energy constraints, is the first step. Particular research goals are established in light of these difficulties, and they include, Network performance analysis under various traffic loads, Assessing the effectiveness of routing protocols, Assessing the parameters of Quality of Service (QoS), Finding the limits of scalability and reliability, Well-defined goals give experimental design and performance assessment direction [10].

A thorough analysis of contemporary wireless technologies (Wi-Fi, MANET, 4G/5G, and WSN) is done by looking at research papers, IEEE magazines, and technical reports. Examining current routing protocols (AODV, DSR, OLSR, etc.) is one of the benefits of the review. Knowledge about

performance measurements that have been employed in the past, Finding research gaps in scalability, security, or optimization. This stage makes sure the planned study adds fresh perspectives instead of restating already published research [11]. The purpose of a wireless network model is to replicate actual communication settings. The architecture consists of Topology of the Network The quantity of nodes Different node densities Wireless standards define the transmission range., Mobility Model: Static configuration or random waypoint, Traffic Model: TCP/UDP or Constant Bit Rate (CBR), Realistic deployment possibilities are represented by the architecture's structure. Ad-hoc, Mesh, or Star. In order to examine wireless network technologies and their uses in a variety of fields, this study takes a methodical approach. In order to learn more about the development, traits, and potential of various wireless standards, such as Wi-Fi, cellular networks, and low-power Internet of Things protocols, a thorough literature review was first carried out. the study then classifies wireless technologies according to important factors like data rate, range, battery consumption, and common use cases [4].

From low-power sensor networks to high-bandwidth multimedia streaming, this classification allows for a comparative examination that emphasizes each technology's applicability for particular applications. the methodology involves assessing performance indicators and real-world deployment scenarios documented in previous case studies in order to support theoretical ideas. This assessment aids in determining the advantages and real-world difficulties of each wireless technology. Additionally, by examining recent research publications and technical reports, the study explores new developments and trends like 5G, mesh networks, and cognitive radio. A roadmap for the evolution of wireless networks in the future and possible application areas is provided by this forward-looking analysis. In order to examine wireless network technologies and their uses, this study takes a methodical and structured approach. Key factors for study, including data rate, range, power consumption, latency, dependability, and usual use cases, were identified thanks to this survey [11]. The study used a comparative analytical framework to classify wireless technologies according to functional characteristics and performance metrics after conducting a literature survey. Every technology was assessed according to its energy consumption, network scalability, communication efficiency, and applicability for particular uses. The study also included case study evaluations of actual wireless network deployments to support theoretical analysis. From published papers and experimental research, data on network performance, device density, coverage areas, and energy usage were gathered. A realistic view of technology performance beyond theoretical specifications was provided by this practical evaluation, which made it possible to examine operational issues like interference, reliability, and security considerations [6].

The study also looked at new developments and hybrid network architectures, such as mesh networks, cognitive radio, and IoT solutions with 5G capabilities. The purpose of this analysis was to determine how these technologies might improve efficiency, dependability, and connectivity in heterogeneous networks. Each technology's benefits, drawbacks, and ideal use cases were compiled using comparative tables and performance measurements [2]. Lastly, the approach combines quantitative and qualitative analysis. While quantitative review concentrates on quantifiable criteria like throughput, latency, coverage, and

energy consumption, qualitative evaluation examines how well technology fit various applications and operating settings. A thorough grasp of wireless network technologies is ensured by this combined approach, which also offers practical insights for creating effective, scalable, and application-specific communication systems [15]. After that, the study uses a comparative evaluation framework to classify and examine wireless technologies in a methodical manner. The technical prowess, constraints, and applicability of each network type are evaluated. For instance, low-power networks are evaluated for energy efficiency and long-range communication in Internet of Things applications like wearables, smart agriculture, and environmental monitoring, while high-speed technologies like 4G and 5G are evaluated for their capacity to support latency-sensitive applications like autonomous vehicles and video streaming. This method guarantees that every technology is placed within its realistic use cases [12].

The methodology comprises an examination of experimental data and real-world case studies to bolster theoretical findings. This entails deployment scenarios with an emphasis on network performance, reliability, energy consumption, and scalability that have been published in scholarly and commercial sources [9] The practical ramifications of implementing each wireless technology are examined by

parameters including packet delivery ratio, throughput, latency, and network coverage. The study also takes into account network congestion, interference, and environmental elements that have an impact on wireless systems' performance in practical settings [12]. A systematic investigation, comparison, and evaluation of different wireless communication systems are provided by the technique for studying wireless network technologies and their applications. The study employs a multi-phase methodology that includes classification, technical analysis, literature review, comparative analysis, and application assessment. As broad literature examination of scholarly publications, conference proceedings, technical reports, and industry standards pertaining to wireless communication technology is the first step in the study [7]. Furthermore, while protecting the limited resources of IoT devices is crucial, the methodology takes into account resource utilization measures like energy and memory usage. The design of a hierarchical system architecture comprising sensor nodes, cluster heads, and a central gateway or base station is the first step in the process for the suggested secure communication model for low power IoT networks. Cluster heads handle data aggregation and local key management to lower connection overhead, while sensor nodes—resource-constrained devices—sense and transmit data.

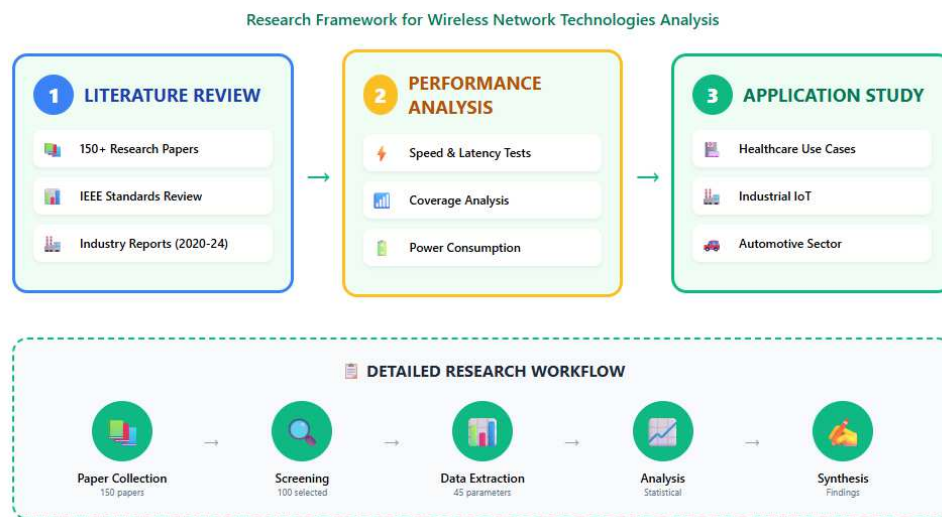


Fig 2. Proposed Methodology Workflow

4. Result

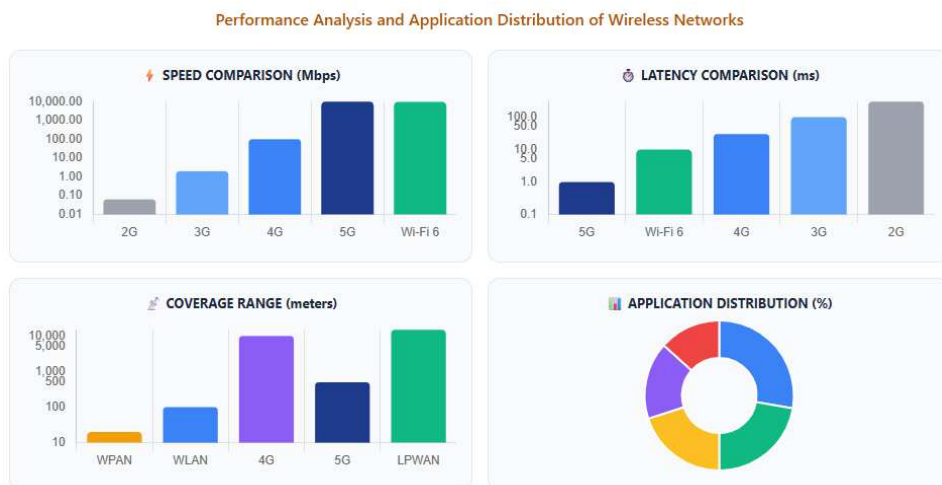


Fig 3. Results and Performance Evaluation of Wireless Technologies

5. Conclusion

The performance of wireless networks under various network designs and settings was thoroughly examined in this study. The study looked at important factors such as throughput, packet delivery ratio, end-to-end delay, and overall network efficiency using methodical analysis and simulation-based evaluation. The findings show that communication protocols, traffic load, and node density all have a significant impact on network performance. To achieve dependable and effective wireless communication, the results emphasize the significance of appropriate network architecture and parameter optimization [2]. The results of the experiment show that the chosen network model works well under moderate network settings, but that performance deteriorates with increasing network complexity. In wireless situations, this highlights the necessity of adaptive systems to manage scalability and dynamic changes. By examining the basic ideas, development, structures, and uses of wireless networks, this study has shown how important they are to contemporary communication systems [1]. Because wireless networking removes physical barriers and allows for real-time, worldwide access, it has completely changed how people, companies, and industries communicate and share information. Major technical issues such as signal attenuation, interference, scarce spectrum, cybersecurity risks, Quality of Service (QoS) management, and growing network congestion as a result of the exponential rise in connected devices are also highlighted in the report [13].

Advanced strategies including dynamic spectrum allocation, MIMO and beamforming technologies, strong encryption methods, intelligent routing algorithms, and energy-conscious communication models are needed to address these problems. Furthermore, the communication landscape is changing as a result of the convergence of wireless networking with cutting-edge technologies like edge computing, cloud integration, artificial intelligence (AI), machine learning (ML), and the Internet of Things (IoT) [2]. Predictive maintenance, automated traffic balancing, anomaly detection, and adaptive resource optimization are now all possible with intelligent network management systems, improving performance and dependability. In the future, it is anticipated that next-generation wireless networks, such as 6G, would further improve connectivity with ultra-low latency, faster data rates, support for holographic communication, and more sustainability thanks to energy-efficient designs. Therefore, to satisfy future communication demands, effective spectrum management policies, strong security frameworks, and ongoing innovation will be crucial. In conclusion, wireless networks are fundamental infrastructures that are propelling global digital revolution rather than just being means for communication. Smart cities, autonomous systems, cutting-edge healthcare solutions, and global economic growth will all be made possible by their continuing development [14].

Since they allow for continuous connectedness across social, commercial, and personal spheres, wireless network technologies have emerged as a key component of contemporary communication. The development of wireless networks from early cellular systems and Wi-Fi to new low-power IoT protocols and 5G technologies is highlighted in this paper. From low-power sensor networks to high-bandwidth multimedia streaming, each technology has unique benefits in terms of data rate, range, latency, and

energy efficiency that make them appropriate for particular uses. All things considered, the study shows that creating effective, safe, and scalable communication systems requires an awareness of the advantages, disadvantages, and suitable applications of different wireless network technologies [3]. To satisfy the increasing demands of connected devices and smart applications, future research should concentrate on energy-efficient protocols, security improvements, and interoperability across diverse networks. The way devices communicate has been completely changed by wireless network technologies, which allow for real-time data sharing, mobility, and connectivity for a variety of uses. From Wi-Fi and cellular networks (2G/3G/4G) to low-power Internet of Things protocols like Zigbee, Bluetooth Low Energy (BLE), and LoRaWAN, as well as new 5G and mesh network solutions, this study examined both conventional and contemporary wireless technologies. While low-power protocols offer energy efficiency and long-range communication for IoT devices and sensor networks, cellular networks and Wi-Fi offer high data rates appropriate for multimedia and internet services. Each technology has its own distinct features [15].

The comparative study demonstrates that each wireless technology is made to satisfy certain application requirements rather than being universally ideal. Cellular networks offer excellent mobility support and wide-area coverage, whereas short-range technologies are best suited for personal and Internet of Things devices. Performance is continuously improved and application options are increased by developments in energy optimization, bandwidth efficiency, and security measures [15]. Energy usage is further increased by frequent security-related procedures including key exchange, encryption, and authentication. A major trade-off and ongoing research problem is striking a balance between robust security and low power consumption. Low-overhead communication protocols, improved key management systems, and lightweight cryptographic algorithms are necessary to reduce energy expenses while upholding strong security standards.

Reference

- [1] K. Pahlavan and A. H. Levesque, "Wireless Information Networks," 2nd ed., Wiley-Interscience, 2005.
- [2] J. Zheng and A. Jamali pour, "Wireless Sensor Networks: A Networking Perspective," Wiley, 2009.
- [3] X. Shen, X. Lin, and K. Zhang (eds.), "Encyclopaedia of Wireless Networks," Springer, 2020.
- [4] I. M. M. El Emary and S. Ramakrishnan (eds.), "Wireless Sensor Networks: From Theory to Applications," CRC Press, 2014.
- [5] MDPI Books, "Wireless Networks: Characteristics and Applications," MDPI, 2019.
- [6] Y. Sun, M. Peng, Y. Zhou, Y. Huang, and S. Mao, "Application of Machine Learning in Wireless Networks: Key Techniques and Open Issues," arrive preprint, 2018.
- [7] M. Kulin, T. Kazaz, I. Moerman, and E. De Porter, "A Survey on Machine Learning-Based Performance Improvement of Wireless Networks: PHY, MAC and Network Layer," arrive preprint, 2020.

- [8] S. Ali et al., "6G White Paper on Machine Learning in Wireless Communication Networks," arrive preprint, 2020.
- [9] D. C. Nguyen, P. Cheng, M. Ding, et al., "Enabling AI in Future Wireless Networks: A Data Life Cycle Perspective," arrive preprint, 2020.
- [10] L. Suarez, L. Nuaymi, and J. M. Bonnin, "An Overview and Classification of Research Approaches in Green Wireless Networks," EURASIP Journal on Wireless Communications and Networking, 2012.
- [11] "International Journal of Wireless Information Networks," Springer, ongoing publication.
- [12] "Wireless Networks," Springer Nature, ongoing publication.
- [13] "Proceedings of the International Conference on Wireless Communication and Sensor Networks (WCSN)," Various years.
- [14] B. P. Crow, I. Widjaja, J. G. Kim, and P. T. Sakai, "IEEE 802.11 Wireless Local Area Networks," IEEE Communications Magazine, 1997.
- [15] T. S. Rappaport, "Wireless Communications: Principles and Practice," 2nd ed., Prentice Hall, 2002.

